

TABLE OF CONTENTS





This product has been rated by the Entertainment Software Rating Board. For information about the ESRB rating, or to comment about the appropriateness of the rating, please contact the ESRB at 1-800-771-3772.

TABLE OF CONTENTS

GREETINGS!	7
TUTORIAL	9
STEP 1: LAUNCH AND LOAD10
STEP 2: SELECTING AN AREA TO BUILD11
STEP 3: BUILDING ROADS12
STEP 4: ZONING RCI13
STEP 5: POWER14
STEP 6: BRINGING YOUR CITY TO LIFE16
STEP 7: WATER AND GARBAGE16
WATER.....	16
GARBAGE.....	18
STEP 8: PROTECTING YOUR CITIES20
STEP 9: FINANCES21
STEP 10: DATA MAPS, CHARTS, AND GRAPHS22
STEP 11: AS YOU CAN BUILD, SO CAN YOU DESTROY23



THE JOY OF MAYORING: A REFERENCE GUIDE.....25

OPENING MENU	26
START NEW CITY.....	26
STARTER TOWN	29
LOAD CITY	29
REAL CITY TERRAIN	30
PREFERENCES	30
PERFORMANCE	31
GENERAL OPTIONS.....	31
SOUND	31
MUSIC CHOICES.....	32
EXIT.....	32
MAIN TOOLBAR	32
LANDSCAPE	33
ZONE.....	34
BUILD TRANSPORTATION.....	36
BUILD UTILITIES.....	38
PLACE CIVIC/SPECIAL BUILDINGS	41
EMERGENCY	43
MEET.....	44
ADJUST & REVIEW	44
CHANGE SETTINGS & EXIT	45
INFORMATION BAR	46
NEWS TICKER.....	46
CITY NAME.....	47
POPULATION.....	47
FUNDS	47
DATE.....	47



SIMULATION SPEED CONTROLLER	47
RCI DEMAND INDICATOR	48
LAYER VIEWS	48
VIEW PANEL	50
NAVIGATION MAP	50
GRID BUTTON.....	50
ADVISORS, PETITIONERS, AND NEIGHBORS	51
ADVISORS.....	51
PETITIONERS	52
NEIGHBORS.....	53
MAPS, CHARTS, AND GRAPHS	54
DATA MAPS	54
CHARTS	56
GRAPHS	57

CITY DEPARTMENTS.....58

FINANCIAL/BUDGET DEPARTMENT	59
MEET YOUR FINANCIAL ADVISOR.....	59
BASICS OF THE FINANCIAL DEPARTMENT	60
Simoleons	60
Budgets and Taxes.....	60
Deals.....	63
Loans	63
Disaster Relief	64
Strategies for Increasing Cash	64
FINANCIAL ADVISOR Q&A.....	65
TRANSPORTATION DEPARTMENT	67
MEET YOUR TRANSPORTATION ADVISOR	67
BASICS OF THE TRANSPORTATION DEPARTMENT	67
Building Your Transportation System	67



Roads and Highways	68
Intersections and On-Ramps	68
Bridges	69
Tunnels	69
Mass Transit	69
Funding Roads and the Mass Transit System	70
Connecting to Neighbors	70
TRANSPORTATION ADVISOR Q&A	71
CITY PLANNING DEPARTMENT	72
MEET YOUR CITY PLANNING ADVISOR	72
BASICS OF THE CITY PLANNING DEPARTMENT	72
Understanding Zones	72
Types of Zones	73
How To Zone	75
RCI Demand Indicator	75
Land Value	76
City Planning Maps, Graphs, and Queries	76
CITY PLANNING ADVISOR Q&A	77
ENVIRONMENTAL DEPARTMENT	79
MEET YOUR ENVIRONMENTAL ADVISOR	79
BASICS OF THE ENVIRONMENTAL DEPARTMENT	79
Trashing Garbage	79
Neighbor Deals	81
Water Pollution	82
Environmental Maps, Charts, and Queries	82
ENVIRONMENTAL ADVISOR Q&A	83
PUBLIC SAFETY DEPARTMENT	84
MEET YOUR PUBLIC SAFETY ADVISOR	84
BASICS OF THE PUBLIC SAFETY DEPARTMENT	84
Police and Crime	84
Fire	87
Disasters	89
PUBLIC SAFETY ADVISOR Q&A	90



HEALTH, EDUCATION AND AURA DEPARTMENT91

MEET YOUR HEA ADVISOR.....91

BASICS OF THE HEA DEPARTMENT91

 Improving Sim Health.....91

 How Sims Learn92

 Raising Education Levels.....92

 Keeping Sims Happy–Aura93

 HEA Maps, Charts, and Queries.....93

HEA ADVISOR Q&A94

UTILITIES DEPARTMENT95

MEET YOUR UTILITIES ADVISOR95

BASICS OF THE UTILITY DEPARTMENT96

 Who Needs Power?.....96

 How Power Is Conducted96

 High Tension Power Lines97

 Power Plants97

 Blackouts97

 Understanding Water98

 Types of Pumps98

 Water Pipes.....99

 Water Supply Problems.....100

 Cleaning Up Dirty Water100

 Neighbor Deals.....100

 Utilities Department Maps, Graphs, and Queries.....102

UTILITIES ADVISOR Q&A.....102

CREDITS..... 104

TECHNICAL SUPPORT 105

GREETINGS!



GREETINGS!

Hello and welcome to *SimCity 3000*! Congratulations on your election as Mayor of one of the finest SimCities in the entire SimNation. I'm sure you are eager to get your city started, but there are a few things you need to know before you dive in.

As Mayor, your job is twofold. You are charged with creating a city that brings your dreams to life, but you also have to provide a good life for your Sims. "What's a Sim?" you ask. All of the little folks that live in all of the little SimCities in that huge SimNation, they're all Sims and you're their new Mayor. But you're



so much more than just their Mayor. You control their destinies. Sure, they can do some things on their own, but it's up to you to give them a nice place to live, to work, to raise their families, to pursue happiness, and all of those other things they should be allowed to do. Just remember—if you don't give them what they're looking for, there's always some other Mayor out there who will and Sims can be quick to leave for greener pastures.

There are all kinds of cities that Sims are willing to live in. There are Sims who'd like to live in a metropolis or maybe a bed and breakfast community or perhaps an industrial town is their thing. Since you're the Mayor, you can build anything you desire and you can count on there being some Sims that will want to move in. If you want, you can even put together a little island out in the middle of nowhere and, if you set up the place right, Sims will move to your city by the dozens.

With the help of this guide and your Advisors, I'm sure you are going to make a great Mayor. Just remember—there are billions of Sims out there just itching to find their own urban paradise and you, you lucky dog, are the person who can give it to them.

TUTORIAL





TUTORIAL

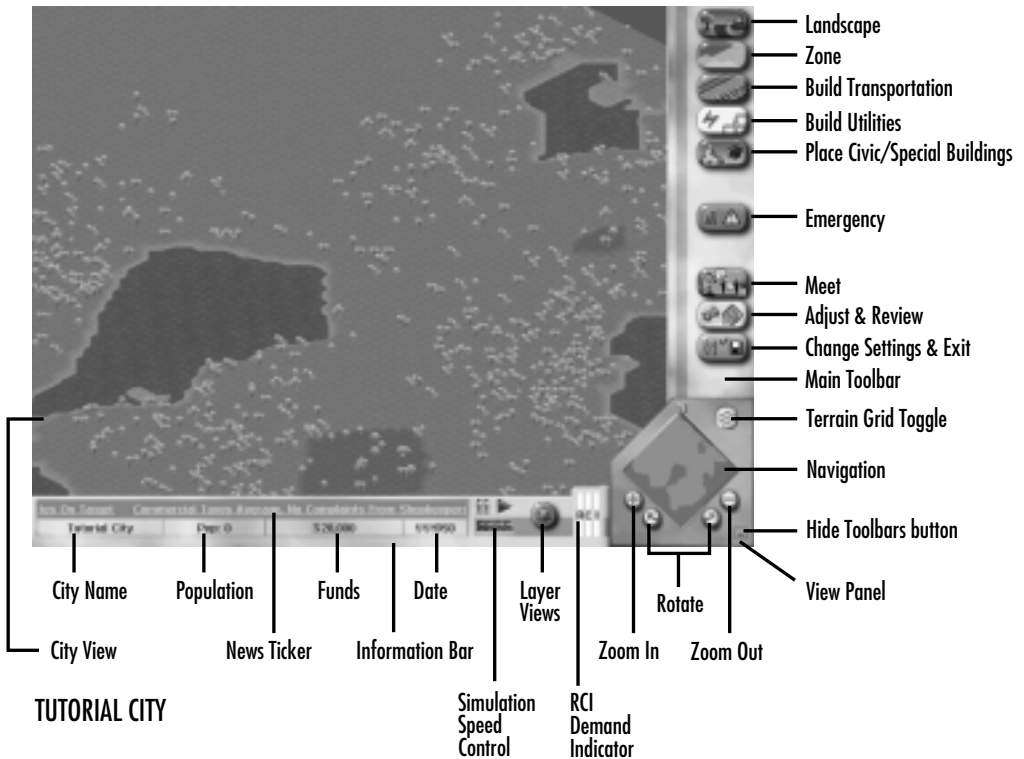
This Tutorial walks you through the beginning stages of building a city. There are many types of cities you can build with *SimCity 3000* and many ways to start; this Tutorial provides one example.

STEP 1: LAUNCH AND LOAD

This tutorial calls for the use of a specific saved game.

- 1. The first thing you need to do is launch SimCity 3000. If you need any help, please see the Reference Card.**
- 2. When the opening menu appears, select Load City, then open the city TUTORIAL**

Each time you start a new city or load a city, the simulation speed is set to PAUSE. Keep it that way for now so you can build in peace, without settling Sims making demands, until you are ready for them.



STEP 2: SELECTING AN AREA TO BUILD

Well, here it is! This is where the magic happens. Over on the right, you have all of the tools you'll need to build any kind of city you can dream of. This is called the Main Toolbar. Across the bottom of the screen, you are given all of the information at a glance that you'll need to make sure every gear is spinning like you want it to. This is your Information Bar.

The first step is to find a large open area to build your future metropolis—the bigger the area, the better.

- ◆ To scroll freely around the City View, click and hold the right mouse button then move the mouse in the direction you wish to scroll....

- ◆ ...or center the view on your cursor. A single-click of the left mouse button accomplishes this.

When you start a new city the zoom level is set to the second furthest zoom level.



- 1. Zoom in one level using the ZOOM IN button in the View Panel.**

STEP 3: BUILDING ROADS

Transportation is critical to the growth of your city. Start by building some roads.



- 1. Select the Road button from within the Build Transportation button menu.**

- 2. Move the cursor over to the City View.**

You'll notice that as you move the cursor into the City View window it will change appearance to indicate the selected tool. In this case, the cursor represents a transportation tool; roads, to be exact.

- 3. Click and drag the mouse where you wish to place your first road. Create a road that is ten tiles in length.**

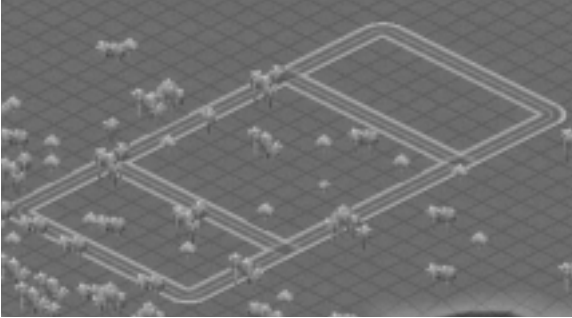
The line you've drawn represents where the road you're creating will be placed; it is called the Drop Shadow. Upon releasing the mouse button, the Drop Shadow turns into road.

If you cannot place an item, the Drop Shadow will turn red to indicate that you need to select a different location.

If you start to place any item and change your mind about placement, you can cancel the action by making sure the SHIFT key is pressed before you release the mouse button.

- 4. Build a series of straight roads along the grid to end up with a square that is 10 tiles by 10 tiles.**

- 5. Continue drawing roads until your map looks like the following picture.**



STEP 4: ZONING RCI

There are three zone types that the Sims need in order to have a functioning city: Residential, Commercial and Industrial. Residential zones are where your Sims live. Commercial zones contain shops and offices. The Industrial zones contain various factories, industries and warehouses. Sims need a lot of room to live, so inside the 10x10 neighborhood you are going to zone for Residential.



1. Click on the ZONE button on the Main Toolbar. A menu of icons will pop up. Click and hold the RESIDENTIAL button.

The Residential icon contains a submenu of options. The active item from the submenu is designated by a checkmark. In the case of the Residential zone button, the default is for Light Residential. Once a different zone density has been selected in this submenu, it will become the new default.

Residential can be zoned in 3 different densities: Light, Medium, and Dense. This allows you precise control over what your Sims can build.

- 2. Move the cursor to highlight Medium Residential and release the mouse button.**
- 3. Move the cursor to the City View and click on one of the corners of the 8x8 enclosed area, but do not release the mouse button.**
- 4. Drag the Residential zone Drop Shadow until it covers the tiles within the 8x8 enclosed area.**

5. Release the mouse button; the Drop Shadow will become a medium density Residential zone.

Don't worry if you don't fill in the square in one swipe. You can click to place individual zone tiles if you need to. Just do as many stretches or individual tiles of the zone as it takes to fill in the square.

In each of the two remaining rectangles, you want to provide an area where Sims will be able to work and shop.

6. Select Light Commercial from the Zone menu and fill one of the enclosed rectangles near your Residential zone.

7. Select Medium Industrial from the Zone menu and fill the remaining enclosed rectangle.

You should now have a layout that looks like the following image:



As you build cities, you will find that you need enough Residential to support both the Commercial and Industrial districts. So don't be surprised when the most prominent zone in your city is Residential.

STEP 5: POWER

Sims need power, yet typically do not like living next to power plants. The farther you can place this plant from your Residential zone the better. However, for the sake of this tutorial, pick a location just slightly away from your zoned area.



- 1. Once you have an area selected, click on the POWER PLANTS button located within the BUILD UTILITIES button menu.**

This brings up a window containing a selection of power plants. Because this city started in the year 1950, you have a very limited selection of power plants.

- 2. Select the coal plant and click the checkmark to close the window. Then move the cursor to the City View over the area you have chosen to locate your power plant.**

Notice that the Drop Shadow for the coal plant is 4x4.

- 3. Place the coal plant with a single-click of the left mouse button.**

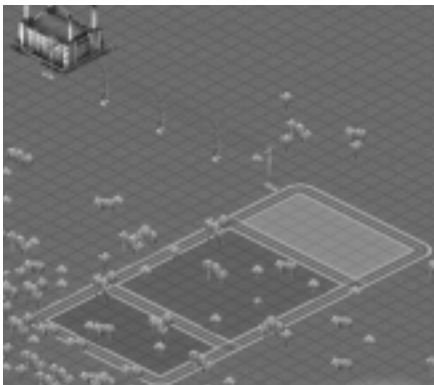
Now you need to run wires from the power plant to the zones.



- 4. Select POWER LINES from within the BUILD UTILITIES button menu.**

Power lines can be drawn like roads; you can click and drag the Drop Shadow in a line.

- 5. Draw a line of wires that connects the coal plant to at least one point of any of your zones.**



For more information on what your Sims' power needs are, please see the *Utilities Department*.

STEP 6: BRINGING YOUR CITY TO LIFE

Are you ready to see your city come to life? It's time to see the first fruits of your labor.



- 1. Move the speed of the simulator from pause to full speed by clicking on the extreme right speed marker on the Simulation Speed Control located in the Information Bar. Then click the RUN SIMULATION arrow to turn the simulation on.**

Let a few months tick by. Sims are starting to move into their new homes, and workplaces are being established. The types of buildings that are built reflect both the density and land value of that zone. For more information on the relationship between zones and land value, see the *City Planning Department*.

You can see time pass by looking at the Date next to the Simulation Speed Control.



- 2. Look at the RCI Demand Indicator in the Information Bar. This tool provides feedback regarding what zone types are in demand in your city.**

When the meter, or bar, for a zone type is up, that means the Sims could use more of that zone type. If the meter is down, then there is a surplus of that zone. It is possible to have the RCI Demand Indicator levels up even though you have a lot of that zone. See the *City Planning Department* for more information.

- 3. Pause the game again by clicking on the PAUSE SIMULATION button on the Simulation Speed Control; it's time for more additions to your city.**

STEP 7: WATER AND GARBAGE

There are two more utilities that are absolutely essential to your Sims' lives: Water and Garbage Disposal.

WATER



- 1. Click on the MEET button on the Main Toolbar.**

This is where you'll go to meet with an Advisor or Petitioner.



2. **Select the Utilities Advisor and select BRIEFINGS from the drop down menu.**

Briefings contain reference documents provided by SimNation.

3. **Read through the briefing “Getting Water To Your Sims.”**



4. **When you’re done, close the Advisor window and select WATER STRUCTURES from within the BUILD UTILITIES button menu. This brings up a window containing a selection of Water Structures.**

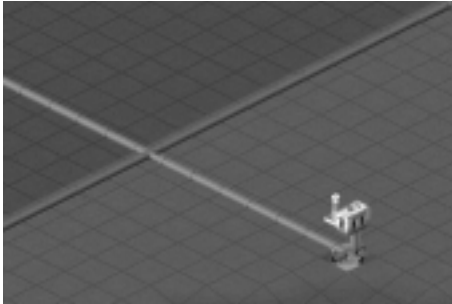
5. **Select the water pumping station from the list of available buildings.**
6. **Move the cursor to a site near your zones in the City View window and place a water pumping station by clicking the mouse button. Water pumping stations must be built near a fresh water source to operate. If the location you have selected for your water pumping station is not within two tiles of fresh water, the pump will have no pumping capacity. The easy solution is to create surface water.**
7. **Water pumping stations require power. Select the POWER LINES button from within the BUILD UTILITIES button menu.**
8. **Draw a line of wires that connect the nearest powered zone or power plant to the water pumping station.**

The water pumping station holds and pumps water to the thirsty Sims, but the water has to get to them first. You’ll need to connect the water pumping station to the zones with pipes as well as connect power to the pump.



9. **Select the Water Pipes button from within the Build Utilities button menu on the Main Toolbar.**

You are now looking at the Underground View of your city. This layer shows how your water pipes are laid out as well as all of the structures that are providing water. The only building you currently see is the Underground View of your water pumping station.



- 10. Click and drag a line of water pipes that connects the water pumping station to your developing zones.**

All tiles within seven tiles of any part of the pipe will be watered as long as there is water running in the pipes.

- 11. Start the simulator by clicking on the fourth tick mark and then the RUN SIMULATION arrow on the SIMULATION SPEED CONTROL in the Information Bar.**

Let a little time pass and watch as water begins to radiate from the pipes to the zones. Watered areas will appear in blue in the Underground View for pipes.

- 12. Now return to the above ground view from the City Layer Views window.**



- 13. Click on the LAYER VIEWS button in the Information Toolbar**

- 14. Click the DEFAULT VIEW button in the View City Layers window and then click on the checkmark.**

GARBAGE

Since Sims are moving in and happily going about their daily lives, you should start seeing messages in the News Ticker letting you know what is going on in the city. The Sims may not be complaining about waste management yet, but trust me when I say, "Deal with garbage early!"

- 1. Click on the MEET button and then select the Environmental Advisor.**
- 2. Read through the Briefing, *Dealing with Garbage*, and then close the Advisor window.**



3. Pause the simulator again so you can do some more work while the Sims “sleep.”

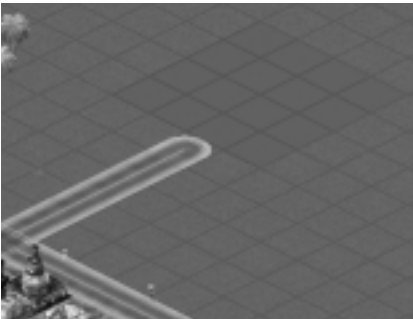
It’s time to start some garbage disposal. To do so, you’re going to zone a landfill in your city. Usually you’d want to keep a landfill as far from your city center as possible, but for this tutorial, you can put it relatively close.



4. Find some land near your zoned area and then select Landfill from within the Zone button menu.

Landfill is a zone, so you can place it the same way you placed the Residential, Commercial, and Industrial zones.

5. Zone a landfill that is 4x4.



You don’t need to worry about powering a landfill, but you need to be sure there’s a way for the garbage trucks to get there.

6. Build a road from the zones to the landfill.

7. Unpause the simulator again.

8. Zoom in using the ZOOM IN button in the View Panel and watch as garbage trucks start taking trash to the dump.

Over time the landfill will show signs of use. This is just one of the many visual feedback systems you will come across. Always keep an eye on things in your city to see how well everything is doing.

STEP 8: PROTECTING YOUR CITIES

Safety is very important in your city. Without police and fire protection, how do you expect your Sims to sleep at night? You need to place a police station and a fire station to satisfy the security needs of your Sims.



- 1. Click on the PLACE CIVIC/SPECIAL BUILDINGS button menu. Here you will find the POLICE and FIRE STATION buttons.**

The submenu in the POLICE button contains the POLICE STATION. The FIRE STATION has its own button next to POLICE.

- 2. Place one of each building along the road near your landfill.**

If you place the buildings more than five tiles away from the zoned area (which has power), you need to run power lines to them from any powered building or zone.



- 3. Click the QUERY button from within the ADJUST & REVIEW button menu.**

Click on anything in your city with this tool to provide information on that item.

- 4. Click on the police and fire station. If they are not powered, you will need to run power lines to them (make sure that the simulation speed is unpaused).**
- 5. When you are done looking at the Query window, click the checkmark in the lower, right corner to close it.**

Keep in mind that having a single police department and a single fire station will only be satisfactory if you never grow your city more than this. For more information on maintaining proper safety coverage, see the *Public Safety Department*.



STEP 9: FINANCES

Practically everything you build has a yearly maintenance cost. The monetary unit of the SimNation is the SIMOLEON.



- 1. Open the Budget window by clicking on the BUDGET button from within the ADJUST & REVIEW button menu.**

This is where you monitor and control the way you spend your money.

- 2. Look at the Police Budget line item.**

You adjust each budget by moving the pointer on the slider in front of each department. Each slider has a marker. The marker represents what the Advisor for that department wants you to allocate.



- 3. Leave the Police and Fire Budgets to what the Public Safety Advisor's asking for.**

At the bottom of the window, you're told whether you are projected to make or lose money at the end of the year.

If it looks like you'll be losing money, you can try raising taxes.

- 4. Click on the Income button at the top of the Budget window.**

- 5. Adjust the taxes for Residential, Commercial or Industrial by clicking on the up or down arrow in the appropriate line to increase or decrease the tax rate.**

Just remember that when you raise taxes, your Sims might not like it and may move away to another city.

- 6. Look through your Income and Expenditures.**
- 7. Close the Budget window by clicking the checkmark in the lower right corner.**

STEP 10: DATA MAPS, CHARTS, AND GRAPHS

There are various Data Maps, Charts, and Graphs your advisors maintain for you. They give an overview of city happenings as well as historical data on various aspects of your city's growth.



- 1. Click on the VIEW DATA button located within the ADJUST & REVIEW button menu on the Main Toolbar. Choose from a list of maps, charts, and graphs to see an overview of your city as it stands now.**

When you are done looking at your city's statistics, close any open windows by clicking on the X in the upper right corner.



Data Maps



STEP 11: AS YOU CAN BUILD, SO CAN YOU DESTROY

Disasters happen all the time in the real world and SimCities are no exception. Before you unleash anything in your city, save the game.



1. Click on the SAVE AS button found within the CHANGE SETTINGS & EXIT button menu; this opens the Save City window.

2. Name the file anything other than Tutorial.

3. You can change where you save your city, but leave this one in the default directory.

4. Click the checkmark to save the city.

Back to the game? Good. Time to destroy what you have created.



5. Press the START DISASTER button located within the EMERGENCY button menu on the Main Toolbar and select FIRE.

A fire will soon start in your city. The City View window will be automatically centered on the location of the fire as it breaks out. This is called the AUTO GO TO DISASTERS feature (this feature can be turned off in the Preferences window).

During a disaster the Simulator runs at a very slow speed to allow you to deal with it. The Simulation Speed Control is disabled until the disaster runs its course. Once the disaster is over, the simulation speed will return to the setting it was at prior to the disaster.

You have to hurry and get some firefighters out to the blaze before it reduces your city to rubble.



6. Click on the DISPATCH FIREFIGHTERS button, located within the EMERGENCY button menu.

You'll want to dispatch your city's firefighters to the location of the fire so they can take care of the blaze. The reason you have firefighters to dispatch is because of the fire station you built. If you had no fire coverage, your Sims would rally a volunteer group to dispatch at your command.

7. Click on a tile near the fire.

This dispatches one of your two fire units, one from your fire station and one being your volunteer group. Each subsequent fire station will give you one additional dispatch unit.

By leaving the fire truck dispatched next to a fire for a long enough time, the fire will be put out.

8. Click on another tile near a fire to dispatch your second fire fighting unit.

9. If you click on yet another tile, it will move the first of your two dispatch units to this new location.

10. Continue to dispatch your fire fighting units to surround the blaze until you manage to put it out.



11. Once you have either put out all of the fires, or your city is burnt to the ground, click on the LOAD button within the CHANGE SETTINGS & EXIT button menu and select LOAD CITY from the submenu.

12. You will be asked if you want to save your current city. Say NO, and then select your saved game when the Load screen comes up. Voila, good as new!

As you continue to explore what you can create as a Mayor of a SimCity, Sims will continue to ask for more and more things (keep your eye on the News Ticker!) and it's up to you to make their dreams, as well as your own, a reality. Feel free to continue building this city, or start a brand new one. The choice is yours!

THE JOY OF MAYORING: A REFERENCE GUIDE





THE JOY OF MAYORING: A REFERENCE GUIDE

This section provides a breakdown of every tool, button, and menu found in *SimCity 3000*.

OPENING MENU

This is the first menu you see when you launch *SimCity 3000*. Your options from this menu are START NEW CITY, LOAD CITY, STARTER TOWN, REAL CITY TERRAIN, PREFERENCES, and EXIT. Each option is detailed below.

START NEW CITY

When you choose to START NEW CITY, your first step is to determine your NEW CITY OPTIONS.

CITY NAME	Anything that suits your fancy, up to a maximum of 50 characters.
MAYOR NAME	What your Sims will call you. Select any name under 50 characters. Last names work best, as your Sims will address you as “Mayor ‘MAYOR NAME’.”
DIFFICULTY LEVEL	Choose an easy game, a hard game, or something in between. Easy games give you more money to start with.
START DATE	The year your city is established.
CITY SIZE	The number of tiles in your city. (Low end systems will have better game performance with smaller cities).



Once your city options are set, click the checkmark and a city terrain is created.

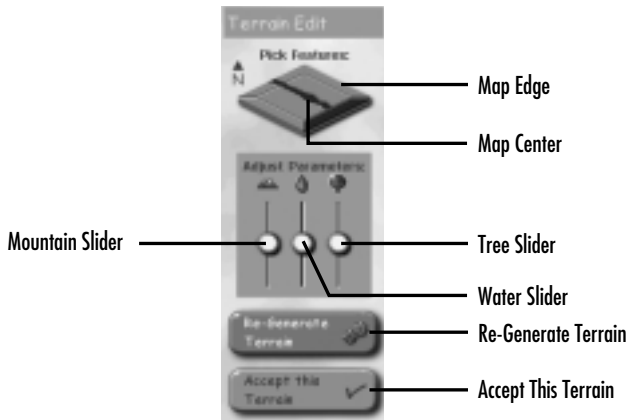
- Select ACCEPT THIS TERRAIN at the bottom of the Terrain Toolbar to immediately start building your city using the terrain you see in the City View window.

Or...

- Click RE-GENERATE TERRAIN to create a new random terrain based on the same landscape profile.

Or...

- Elect to edit a terrain to suit your fancy by using the tools in the Terrain Toolbar as described below:



- MAP EDGE** Clicking on any of the four Map Edges cycles between a coast line and a neighbor border.
- MAP CENTER** Clicking on the Map Center cycles between dry land, rivers, lake and mountain.
- MOUNTAIN SLIDER** Raising and lowering this slider will increase and reduce the amount of mountainous areas on your terrain.
- WATER SLIDER** Raising and lowering this slider will increase and reduce the amount of water on your terrain.
- TREE SLIDER** Raising and lowering this slider will increase and reduce the amount of trees on your terrain.
- RE-GENERATE TERRAIN** Any time you make adjustments in the Terrain Toolbar you must press this button for the changes to take effect on the actual map.
- ACCEPT THIS TERRAIN** Establishes your new city using the terrain depicted in the City View window.



STARTER TOWN

Various “standard” designs, or templates, have been used for years by various mayors in various cities all across the world. These templates are available to you in the form of STARTER TOWNS. These are ready to go templates based on city planning theories through the ages. All of a city’s basic needs are laid out. Simply unpause the simulation and watch them build. Where these templates go from here is up to you.



- Select the Starter Town you would like to use and click the checkmark.
- The next step is to determine your NEW CITY OPTIONS, choose a Mayor Name, City Name, and the Difficulty Level you’d like to play at.

LOAD CITY

The Load City button allows you to load both *SimCity 3000* cities and *SimCity 2000* cities.





- Select the city you'd like to continue playing and click the checkmark.

That's all there is to it!

REAL CITY TERRAIN

SimCity 3000 comes with several starting terrains based on geographic data from real cities all over the world.

- Select the terrain you would like to build on and click the checkmark to proceed to the NEW CITY OPTIONS window described above.



PREFERENCES

Everyone likes to run their city a certain way. Setting the Game Preferences to fit your style will make you a happier Mayor.





PERFORMANCE

These settings allow you to fine tune your game to suit the performance of your system. When you turn any of these settings OFF, *SimCity 3000* will run at a faster rate.

- TRAFFIC VISIBLE** This determines at which zoom levels you can see traffic. Only turn this up to the highest level if you have a Recommended System (see the *REFERENCE CARD* for more information).
- SIMS VISIBLE** This determines at which zoom levels you can see your Sims walking the streets.
- OTHER ANIMATIONS** This selection includes building animations and graphic effects that are not essential for game play.
- SCREEN RESOLUTION** This selection will allow you to set the screen resolution of your game window. The smaller the size, the faster the game will run. Changes in screen resolution will not take place without restarting *SimCity 3000*.

GENERAL OPTIONS

Allows you to toggle on or off the *SimCity 3000* Start Up Tips.

SOUND

Check boxes for these options turn the selection ON or OFF, and the sliders increase or decrease the volume.

- MUSIC** Control the volume or toggle on or off the selection of scores that will be played in random order throughout gameplay.
- AMBIENT SOUND** These are the sounds you hear when you zoom in and get close to the city.
- SOUND EFFECTS** The noises you hear when you do action items in the game.
- ENABLE 3D SOUND** This option will only be editable if the game has detected the necessary hardware.



MUSIC CHOICES

Highlight a music selection and preview it by clicking the PLAY button below the list of selections. Check the selections that you want to play during gameplay. Those that are left unchecked will not be included in the random selection of music.

EXIT

Just like it sounds, this button will exit the game.

MAIN TOOLBAR

The Main Toolbar contains buttons that can have up to two levels of tools within them. Clicking on a button on the Main Toolbar displays the tools that button menu offers. Some of those buttons have a submenu within them. To activate the submenu, simply click and hold on a button. The active tool in the submenu is designated by a checkmark.

In order to aid the exact placement of every item in SimCity, everything you can place has a Drop Shadow. The Drop Shadow is a preview of what you are about to place. In general, if the Drop Shadow is blue, an item can be placed or built. If the Drop Shadow is red, it is not possible to build or place the selected item.

Everything in SimCity is placed with a single-click of the mouse button. Items like transportation systems, pipes, wires, and zones can also be placed by clicking and dragging the cursor over an area and then releasing the mouse button.

The cost of construction is actively displayed as you place an item. This cost will be subtracted from your operating funds as you release the mouse button.

You can cancel the placement of any item by holding down the **SHIFT** key before releasing the mouse button.





LANDSCAPE

This is where you go for all of your terrain editing needs. When it comes to placing items like Trees or Surface Water, a single click or a click and drag of the mouse in the City View will place those items. The terrain modifying tools do not actually place anything on the map when used. Instead, they raise, lower or level a piece or section of terrain with each click or click and drag of the mouse.



PLANT TREES: Click or click and drag on an undeveloped tile with this tool to plant trees. The more you click or click and drag, the more trees are placed on undeveloped tiles. The type of tree that is placed depends on the elevation.



CREATE SURFACE WATER: Click or click and drag with this tool to place water on undeveloped tiles.



LOWER TERRAIN: Clicking on any tile with this tool lowers the terrain by one level. As a tile is lowered it will lower the surrounding tiles as well. You cannot lower terrain if buildings are affected.



RAISE TERRAIN: Clicking on any tile with this tool raises the terrain by one level. It can also raise up surrounding tiles. You cannot raise terrain if buildings are affected.



LEVEL TERRAIN: Use this tool to create areas of flat terrain to build on. Click on a tile of terrain with the left mouse button and then drag the mouse with the button still held down. The selected area will level to the height of the first tile selected.



DEMOLISH: Does just what it says; clicking on any Sim-made object (as well as trees) with this tool destroys or removes it. Click and drag over an area to demolish all objects in that entire area.

ZONE

This button menu houses all of the zoning tools. Zoning means you designate a zone, and the Sims will develop the appropriate buildings within that zone. All zones are placed by clicking and holding the mouse button and then moving the mouse to draw the desired zone shape. You can place a single tile of zone with a single-click of the mouse button. If you zone an area as Residential, then only Residential buildings will spring up there.

What actually builds in the Residential, Commercial, Industrial, Airport and Seaport zones is up to the Sims. You are merely placing restrictions on what type of buildings and how dense the zones can get. Keep in mind that just because you have zoned for a certain density, you won't necessarily see that zone develop to its fullest until there is the necessary demand.



RESIDENTIAL: From here you can decide what density of Residential you want to zone.

The density choices are:

- > **Light** – Includes: single family homes.
- > **Medium** – Includes: small apartment buildings.
- > **Dense** – Includes: large apartment buildings.



COMMERCIAL: This is where you decide what density of Commercial you want to zone.

The density choices are:

- > **Light** – Includes: mom and pop stores, gas stations.
- > **Medium** – Includes: medium size office buildings and stores.
- > **Dense** – Includes: large office buildings and large stores.



INDUSTRIAL: Here's where you can select what density of Industrial you want to zone.

The density choices are:

- > **Light** – Includes: agricultural areas, small factories and warehouses.
- > **Medium** – Includes: medium factories and warehouses.
- > **Dense** – Includes: large factories and warehouses.



LANDFILL: Landfills are the cheapest way (monetarily) to dispose of garbage, but they destroy the land they are built on and ruin the land value of surrounding areas. Each tile of landfill can hold up to a certain amount of trash. As the landfill fills up you will notice piles of garbage. Query a landfill tile to find out the disposal capacity system-wide. Landfills decompose garbage at a slow rate over time. Landfills can not be demolished while garbage is present, however, if you de-commission a landfill you can de-zone the area once all of the garbage has decomposed.



SEAPORT: This zone helps industry and commercial zones to grow, as well as opening a powerful means of removing garbage from your city. Seaports must have water access to a neighbor and be at least 2x6 tiles in order to develop.



AIRPORT: Available in 1930, airports help the commercial districts to grow by blowing open the doors to travel. Airports need to be at least 3x5 tiles in order to develop.



DE-ZONE: The De-Zone tool removes any pre-existing zone. In order to De-Zone an area, there can be no buildings over the target area, so you may have to demolish the area first.



DEMOLISH: Click on any Sim-made object to destroy or remove it. Click and drag over an area to demolish all objects in that entire area.

BUILD TRANSPORTATION



Everything you need to create a functioning transportation system is here, from roads to subway.

Transportation networks are drawn very much like zones, except they can only be drawn in a line (straight or diagonal). Transit types include: road; highway; rail; and subway rail. To place a line of any of these items, click and hold the mouse button while moving the mouse where you want to place the object. As long as the Drop Shadow highlight is blue, the item will be successfully built. If the terrain or presence of surrounding buildings will prevent an item from being placed, the Drop Shadow will turn from blue to red. The selected transit type will not be built along the path of the red Drop Shadow. See the *Transportation Department* section for more information.

City engineers will jump to your assistance in building some transportation elements:

- To make a connection to one of your neighboring cities, simply draw a road, highway, rail or subway to the edge of your city terrain. The city engineers will ask if you wish to build a connection and let you know the cost. If you accept the cost, they will construct the connection.
- To build a road, highway or rail bridge, drag the Drop Shadow for the selected transit type across a body of water (it must be perpendicular to the water and straight). The blue highlight will let you know when you have successfully crossed the water and the engineers are able to construct a bridge. The city engineers will let you know the cost of the span, and if you accept, will build an appropriate bridge.
- A road or rail tunnel will be recommended by the city engineers when traversing mountainous terrain. Drag the transit Drop Shadow to the base of steep terrain. If the underground distance is sufficient for the tunnel to



be constructed, six tiles minimum, the city engineers will ask if you wish to bore a tunnel and let you know the cost of this construction. If you accept, the cost of the tunnel construction will be deducted from your operating funds and the city engineers will place a tunnel entrance and exit and bore the tunnel for you.

Transportation Menu Items:



ROAD: Roads can be placed as a single tile, or clicked and dragged to be placed in a line, straight or diagonal.



HIGHWAY: Available in 1940, highways are elevated, high capacity roads. They allow traffic to travel more efficiently over greater distances.

- Highway - To build a highway, select a location and drag the highway tool across the terrain, release the mouse button to place the highway.
- On-Ramp - To place an on-ramp to a highway, you must first have a road to highway intersection or highway to highway intersection. Position the on-ramp tool in the tile adjacent to any corner of the intersection and single-click. An on-ramp will be built.



BUS STOP: Available in 1920, bus stops must be placed adjacent to a road tile to be effective.



RAIL: Sims won't ride the rail unless a train station is connected. Within this button, you have access to:

- **Lay Rail** - Rail is the track trains run on.
- **Train Station** - Train stations are where Sims get on and off the rail. Train stations must be placed adjacent to rail to be effective.



SUBWAY: Selecting the subway tools will automatically place you in the underground view. The colors in this view indicate what you would see above ground; brown is open terrain (the darkest brown indicates terrain

that you can not build subways on), gray represents above-ground road or rail, dull orange is zoned yet undeveloped and bright orange is zoned and developed. The following items are available in this button's submenu:

- **Lay Subway Rail** – Available in 1910, subway is underground rail and these are the tunnels the trains travel in.
- **Subway Station** – Available in 1910, subway stations are where the Sims get on and off the subway. The stations must be placed so they are adjacent to the subway rail to be effective.



SUBWAY TO RAIL CONNECTION: This structure allows Sims to transfer from train to subway and vice-versa.



DEMOLISH: Does just what it says; clicking on any Sim-made object (as well as trees) with this tool destroys or removes it.

BUILD UTILITIES



Power, water, and garbage disposal are covered in these tools. Each utility has specific buildings that serve specific functions. These buildings require connection to the developed zones to carry out their functions: pipes for water, wires for power, roads for garbage disposal.



POWER LINES: By selecting this item, you have the ability to place high voltage power lines. See *The Utilities Department* for more information.



POWER PLANTS: Behind this icon lies a selection of up to eight different power plants (inventions occur during the course of time, some of these plants will only become available as they are invented). The full list of power plants is as follows:



- **Coal Power:** An inexpensive power plant but costly in terms of the amount of pollution it creates. It's good for starting out, but you'll probably want to replace it over time for a source of power that is less polluting. The coal power plant is available in 1900.
- **Oil Power:** Oil power plants don't produce a lot of power and they tend to pollute a fair amount, but they are inexpensive. The oil power plant is available in 1900.
- **Gas Power:** Natural gas feeds the city when this is your source of energy. You don't get much power for the cost, but these plants pollute less than the fossil fuel plants. The gas power plant becomes available in 1955.
- **Nuclear Power:** Please be careful when handling a nuclear plant. Why? The possibility of an explosion and nuclear meltdown is real if these plants are used over their power production capacity. Nuclear power becomes available in 1965.
- **Wind Power:** Wind power is very clean. You'll need a lot of them to power even a small sized city. Place these on top of hills to be most effective. Wind power becomes available in 1980.
- **Solar Power:** Ah, the sun. Solar power is rather expensive to maintain, but it's very clean and may someday save this planet when fossil fuels run out. Solar power becomes available in 1990.
- **Microwave Power:** A satellite up in space collects solar energy 24 hours a day and then beams it down as microwaves. Microwave power becomes available in 2020.
- **Fusion Power:** This plant won't be available until 2050, but once you can get it, you'll be glad you did. Fusion power, though expensive, is clean and efficient.



WATER PIPES: This tool allows for the placement of water pipes that will carry large amounts of water to an area. Selecting this tool will automatically place you in the underground view. See the Utilities Department for more information.



WATER STRUCTURES: These structures are necessary to have a working water system and must be connected via pipes to the developed areas of your city. The following buildings are found behind this button:

- > **Water Pumping Station:** Water pumping stations hold and process the water that the Sims drink. They must be placed near a source of fresh water to pump at full capacity.
- > **Water Tower:** Water towers are a smaller capacity version of a water pumping station. They draw water from underground springs so they can be placed anywhere and run at full capacity.
- > **Water Treatment Plant:** Available in 1935, water treatment plants lower the amount of pollution in the water.
- > **Desalinization Plant:** Available in 1960, desalinization plants convert otherwise unusable seawater into drinking water. It's the wave of the future.



GARBAGE DISPOSAL: The following structures, available in the Waste Management Buildings window, allow you to get rid of garbage.

- > **Incinerator:** Available in 1920, incinerators can dispose of large amounts of garbage, but create a lot of air pollution.
- > **Recycling Center:** Available in 1970, recycling centers help lower the amount of garbage that is taken to landfills and incinerators.
- > **Waste To Energy Incinerator:** Available in 2000, this incinerator provides power as it burns garbage. Your waste is converted to usable energy within this structure.



DEMOLISH: Does just what it says; clicking on any Sim-made object (as well as trees) with this tool destroys or removes it.



PLACE CIVIC/SPECIAL BUILDINGS



Government buildings like hospitals and police stations, as well as Landmark buildings, can be found here.



POLICE: This button allows you to place:

- **Police Station** – These buildings help lower the crime level in your city, as well as provide units to dispatch in times of emergency.
- **Jail** – Provides a place to keep your criminals.



FIRE STATION: This is where you go if you want to place a fire station.



HEALTH AND EDUCATION: Here you can find all of the buildings that help to increase the Sims' education and health level. They are:

- **Hospital:** Your Sims go here when they are ill. Each hospital can handle only so many patients. Having an insufficient number of hospitals can result in a shorter life span for your Sims.
- **School:** An essential investment toward the education of your Sim population. Each school has a limited capacity; you'll need to support your growing population with an adequate number of schools.
- **College:** Colleges are another essential component to the education of your Sim population. Each college can enroll a limited number of students. Make sure you provide an adequate number of colleges.
- **Library:** This building helps keep adult Sims sharp.
- **Museum:** This building keeps adult Sims entertained and knowledgeable.



PARKS AND RECREATION: This is where you'll go for all of the structures that will add to your Sims' happiness.

Items available within this submenu are:

- > **Small Park:** Ah, a nice quiet park for your Sims to rest in.
- > **Large Park:** A larger open space for your Sims to relax and have picnics in.
- > **Fountain:** Nice for downtown areas.
- > **Pond:** A nice place for Sims to picnic.
- > **Playground:** Young Sims love a place to play.
- > **Marina:** Your Sims launch their boats from here.
- > **Zoo:** Sims of all ages love to see the wondrous beasts at the zoo.
- > **Ballpark:** A ballpark where your Sims can get together and play some ball.



LANDMARKS: Here's where you go to place a signature building in your city. When you select this option, a window opens that allows you to pick a landmark building to place in your city. You are limited to ten landmark buildings in any single city.

If you have placed all ten landmark buildings, there will be a message reminding you of that fact.

If you have placed a specific landmark building and have that building selected in the menu, a message will appear letting you know the building is already placed. You can only place one of each in a city.

Feel free to mix and match landmark buildings from all different countries and cities!



REWARDS & OPPORTUNITIES: Occasionally you are given a special building as a gift or approached with an opportunity from a Petitioner. This is where you'll go for either situation. Each building has a description so you'll know exactly what you are about to place. You can place these buildings as they become available or decide to wait until you feel the moment is right.



DEMOLISH: Does just what it says; clicking on any Sim-made object (as well as trees) with this tool destroys or removes it.

EMERGENCY



Here you'll find tools that will help fight disasters, as well as tools that create them. The *Public Safety Department* section can provide you with additional information.



GO TO DISASTER: When a disaster is happening in your city, this button will center your City View on the location. If there is more than one disaster happening at a time, pressing this button centers your City View from one emergency to the next in the order in which they started.



ACTIVATE WARNING SIREN: Keep your eyes on the News Ticker. When disastrous events are hinted at, you can use this button to give the Sims an early warning. Be careful though, after enough false alarms, the Sims aren't likely to heed your cries.



DISPATCH POLICE: Police will fight various crimes. To dispatch police units, select this button, then click on a tile in the City View window as close to the "incident" as possible. This will dispatch police units to that location, indicated by a dispatch icon. You only need to dispatch police when an emergency occurs outside of a precinct, as long as you are funding the department adequately.



DISPATCH FIREFIGHTERS: Firefighters put out fires. To dispatch fire fighting units, select this button, then click on a tile in the City View window as close to the fire as possible. This will dispatch a fire fighting unit to that location, indicated by a dispatch icon. If you have adequate fire coverage due to the proper placement of precincts, you won't have to dispatch to emergencies. You only need to dispatch when an emergency occurs outside of a precinct, as long as you are funding the department adequately.



START DISASTER: Every now and then you may get the desire to wreak havoc on your city. Here's the place to come to scratch that evil itch. Selecting an item from the following menu will inflict that disaster on your city:

- **Fire:** Burn baby burn!
- **Tornado:** Rock you like a Tornado!
- **Earthquake:** Shake, rattle and roll!
- **Riots:** Power to the Sims!
- **UFO:** Little green men!

MEET



Clicking on this button opens the Advisors and Petitioners window. See *Advisors*, *Petitioners* and *Neighbors* for more information.

ADJUST & REVIEW



These tools help you make executive level changes to the way your city functions. You can also get various overviews of your city here.



BUDGET: This is where you go to manage your finances.



NEIGHBORS: You can check on your neighbors as well as adjust and check on current deals you have with them in this window. For more information on this window and deals see the *Advisors, Petitioners and Neighbors* and the *Utilities Department* sections.



ORDINANCES: You can set laws in this window. To find out information on each ordinance, check with your advisors. Each Advisor will provide information on ordinances that affect their department.



QUERY: Once you have this tool selected, you can click on any item in the city to get critical information on it. For example, the query window for power plants will show their maximum capacity as well as current usage.



VIEW DATA: From this button you have access to all of the maps, charts, and graphs that are kept up by your Advisors. See the *Maps, Charts, and Graphs* section for more information.

CHANGE SETTINGS & EXIT



This is where you go to set preferences, save and load your city, and exit back to the mundane world. These settings will be saved with each city.



PREFERENCES: From the in game Preferences window, in addition to editing the preferences available to you from the main menu, you can set the following city options:

- **Disasters** – Enables and disables disasters.
- **Auto Budget** – When this is CHECKED, the financial advisor will maintain status quo on each budget item. The Budget window will only appear at the end of the year if the city's end of year funds are negative.
- **Auto Go To Disasters** – When this is CHECKED, your City View will automatically center on a disaster when it occurs.



SAVE CITY: This allows you to save the city you are currently working on.



SAVE AS: This opens the Save window allowing you to save and re-name the city you are currently working on.



LOAD: This button gives you the option of loading a Saved City, a Starter Town. You will be given the option of saving the city you are currently working on first.

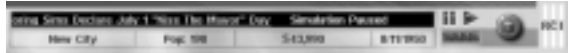


NEW CITY: Selecting this button allows you to start a new city. You will be given the option of saving the city you are currently working on.



EXIT: Just like it sounds. When you've had your fill of complete power, you can click this button to go back to the real world. You will be prompted to save your city before exiting.

INFORMATION BAR



The Information Bar across the bottom of your screen gives you citywide information at a glance.

- To hide the Information Bar, click the Hide Toolbars button. To retrieve the bar, click the button again.

NEWS TICKER

There are various types of messages that come across the News Ticker. They will tell you about everything going on in your city, from little kids that are stuck in trees to the latest tornado to touch down.

- Orange text messages give you general information about the goings on in your city.



- Underlined green text messages are from one of your Advisors or a Petitioner. Click on them to open the Meet window for that Advisor or Petitioner.
- Plain yellow text messages update you on game states, including when your simulation speed is set to pause.
- Pay particular attention to red underlined text messages. These messages alert you to emergency situations in your city that require your immediate attention. Click on these messages to take you to the site of the emergency in progress.

CITY NAME Clevelandville

This is where your city's name is displayed.

POPULATION Pop: 56,148

The number of Sims living in your city is shown here.

FUNDS \$ 10,000

This is how much money you currently have. The currency of the SimNation is called the Simoleon.

DATE 1/1/1900

This is the current date of your SimCity. New inventions come along as the years pass, and demands of the Sims change as well with the passage of time. The faster your simulation speed is set, the faster time will pass. While the simulation is paused, time stands still.

SIMULATION SPEED CONTROL

The Simulation Speed Control is shown here. Clicking on the markers controls the speed of the simulation—how fast the days, months and years pass. You can halt the Simulation by pressing the PAUSE SIMULATION button. You can unpaused the Simulation by pressing the RUN SIMULATION button.

RCI DEMAND INDICATOR



This device tells you what zone types are in demand and what zone types are in surplus. See *City Planning Department* for more information.

LAYER VIEWS



This button gives you access to the VIEW CITY LAYERS window. From here you can turn on and off the display of certain city elements and have quick access to data views in the City View window. Use the check boxes and radio buttons to determine your view options, then click the APPLY button to update the City View window. Your chosen City View, above or below ground or city layer views, will update to reflect your choices.

ABOVE GROUND: Checking or unchecking these selections allows you to turn on and off elements in the City View Window.

- > **Transportation:** Toggles on and off all of the transportation networks in your city.
- > **Power Lines:** Toggles on and off all of the power lines in the City View.
- > **Flora:** Toggles all of the trees on and off in the City View.
- > **Zoned Buildings:** Toggles on and off all of the zoned residential, commercial, industrial, airport, and seaport buildings in the City View.
- > **Other Buildings:** Toggles on and off all non-zoned buildings in the City View.
- > **Zones:** Toggles on and off the zones in the City View.

UNDERGROUND: A quick way to check out your city's underground views. In both underground views areas colored in brown indicate open terrain, bluish brown represents where natural water appears above ground, grey represents where roads are placed above ground, dull orange



represents zoned yet undeveloped areas, bright orange represents zoned and developed areas.

- **Subways** – This underground view shows the city’s subway system as well as the underground portion of the subway system transit buildings.
- **Water Pipes** – This underground view displays the underground portion of your water structures as well as the water pipe network. Once watered, an area will appear blue.

CITY LAYER VIEWS: These radio button selections enable display of the selected data view information in your City View Window.

- **Aura** – The higher the intensity of blue, the better the aura.
- **Crime** – The higher the intensity of red, the more crime.
- **Density** – The higher the intensity of blue, the higher the density in the area.
- **Electric Power** – Powered areas vs. non-powered areas.
- **Flammability** – The higher the intensity of red, the higher the fire hazard.
- **Land Value** – The higher the intensity of blue, the higher the land value.
- **Pollution** – The higher the intensity of red, the higher the pollution.
- **Traffic** – The higher the intensity of red on the transit system, the higher the density of traffic in that area.

DEFAULT VIEW: Returns all of the above to their original settings.

APPLY: Once you have adjusted the settings, APPLY will update your City View to reflect your choices. Toggle between view types using the ABOVE GROUND, UNDERGROUND and CITY LAYER VIEWS buttons.

Click on the checkmark when you want to close the City Layer Views window.

VIEW PANEL



This is where you can go to rotate your map, zoom your view in or out, or go to a specific point in your city.

NAVIGATION MAP



The map shows you an overhead image of your entire terrain. Click anywhere on the map to center your City View window on that location. You can elect to use any of the data maps in the Navigation Map area, see the section on *Data Maps* for more information on this feature.



ROTATE MAP CLOCKWISE: Rotates your Navigation Map and City View Window clockwise.



ROTATE MAP COUNTERCLOCKWISE: Rotates your Navigation Map and City View Window counterclockwise.

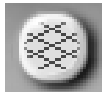


ZOOM IN: Zooms your City View window in one level each click.



ZOOM OUT: Zooms your City View window out one level each click

GRID BUTTON



This button toggles on and off the tile grid in your City View window.



HIDE TOOLBARS BUTTON

The Hide Interface button allows you to toggle on and off the *SimCity 3000* user interface, allowing you to see your City View unobstructed. Click once to hide the interface, click again to show the interface.

ADVISORS, PETITIONERS, AND NEIGHBORS

Sims make great citizens because they're an active part of their community. When they have something to say, they won't hesitate to do so.

ADVISORS

A group of seven Advisors are always available to help you with the many aspects of being Mayor. To meet with an Advisor:

- ▶ Open the Advisors and Petitioners Window from the MEET button menu on the Main Toolbar.



- ▶ Select the Advisor you wish to meet by clicking on his or her picture in the top half of the Advisors and Petitioners Window.

Each Advisor has a list of relevant NEWS TOPICS, BRIEFINGS and department ORDINANCES he or she may want to discuss.

- ▶ Choose the type of information you wish to discuss from the selection box,

News Topics, Briefings or Ordinances.

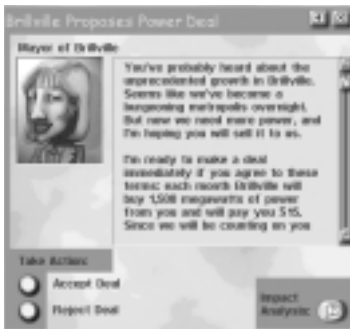
- The list of topics will update to reflect your choice of topic.
- Select from the list of topics by double clicking on a message.
- When you are done reading any specific message, click the X in the upper right corner of the message window to close it.

Advisors keep up with all of the goings on in your city. They'll give you up-to-the-minute feedback on issues relating to their departments.

PETITIONERS

Petitioners can be anyone from your friendly neighborhood Sim to the Mayor of a Neighboring Town.

Petitioners are located at the bottom of the Meet window, which you access from the MEET button menu in the Main Toolbar. Once in the Meet window, click on any Petitioner to see what they have to say. They may be offering you a deal or complaining about the way you are Mayoring.



In this example, you're being offered a deal by the Mayor of one of your neighboring cities. The first thing you may want to do is consult one of your advisors.

- Consult your Advisor by clicking on the IMPACT ANALYSIS button.
- When you are done reading, click the checkmark to take you back to the previous screen.

Once you know what you're dealing with, you can either accept or reject the

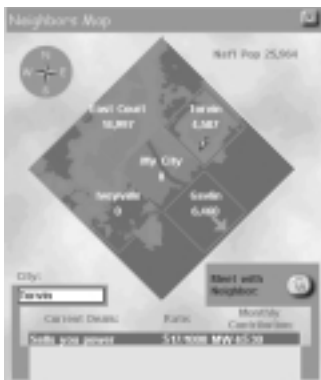


offer. If you reject the offer, the Petitioner leaves; sometimes they never come back. If you accept the offer, it goes into immediate effect, unless you need to place a building to complete the deal.

If you need to place a building to complete the deal, select the REWARDS & OPPORTUNITIES button from within the PLACE CIVIC/SPECIAL BUILDINGS button on the Main Toolbar. This opens the Rewards & Opportunities window, from which you can select the appropriate building.

Sometimes a Petitioner pops up just to give you some information. When there is no decision to be made, you can click on the X in the upper right corner to close the message.

NEIGHBORS



Your neighboring cities can provide critical resources or even cash flow to your city by setting up deals to trade for power, water or garbage disposal. To enter into a deal with your neighbor you must first connect to them:

- To exchange power, you need a power line connecting your city to one of your neighboring cities.
- A water deal requires a water pipe connection to one of your neighboring cities.
- If you are looking to make a deal for garbage disposal, you will need a road, highway, rail or seaport connection.



- See the *Utilities Department* and *Environmental Department* sections for more details on Neighbor Deals.

When these connections are in place and the conditions are right (you have excess or insufficient resources or disposal means) the Mayor of the city your connection runs to will approach you via the Petitioners Meet window with terms for an import or export deal. Deals are updated periodically to reflect both your city's and the neighboring city's needs.

You can check up on your neighbors as well as any active Neighbor Deals at any time by clicking on ADJUST & REVIEW on the Main Toolbar and selecting NEIGHBORS.

The Neighbors window shows each of your neighbors, their population, names and locations as well as details on all current deals.

- To check greater detail on any deal, highlight the deal in question and then click the MEET WITH NEIGHBOR button.
- To cancel a deal, select the appropriate deal and then press the MEET WITH NEIGHBOR button. From there you can choose to terminate the current deal. Remember this could result in a hefty termination fee.

MAPS, CHARTS, AND GRAPHS

Your Advisors keep track of many things for you, including various Data Maps, City Graphs, and Charts. You access all of these items by clicking on the View Data button within the ADJUST & REVIEW button menu on the Main Toolbar.

DATA MAPS

Data Maps show how specific areas of your city are functioning. Each Map has a legend in the bottom right corner that explains what you are looking at.

- You can use any of the data maps as your Navigation Map by clicking the USE AS MAP button in the Data View window.
- To see the information from each data map in your City View window, use the Layer View button in the Information Toolbar.



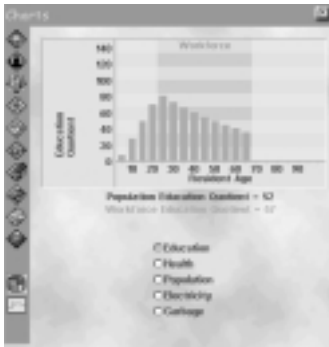


The following maps are always available to you:

- **Aura Data Map:** Aura shows the overall happiness in a city. This map gives you an idea of what areas are in a better mood than others.
- **Crime Data Map:** This map shows you not only where crime is a problem, but where you've set up police stations and their precincts. When viewed as a map, a dot with a circle around it represents the station and its precinct.
- **Density Data Map:** With this map you can see where the Sims are populating your city. The various densities of each zone are made visible here.
- **Power Data Map:** You are able to tell what areas need power and what areas have power with this map.
- **Flammability Data Map:** The city's flammability levels as well as fire station coverage are found here. The higher the flammability the more likely fires will happen in that area. Fire stations and their coverage areas are depicted by dots with circles around them.
- **Land Value Data Map:** This map shows the varying land value throughout your city.
- **Pollution Data Map:** The city's pollution is broken down in this map. You are shown where air pollution, water pollution and garbage are a problem.
- **Traffic and Transportation Data Map:** Traffic density for both road and rail is displayed in this map.
- **Water Supply Data Map:** Here you are able to see what areas have water.
- **Zones Data Map:** This map shows the location and area of each zone type in your city.

CHARTS

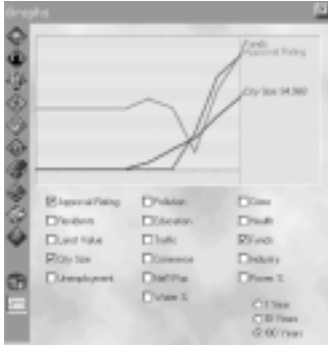
There are five different charts available to you. They are as follows:



- **Education:** This chart shows the Education Quotient (EQ) of your Sims at their various ages. The EQ of your Work Force is very important. When this level gets high enough, you can see all kinds of positive changes occur in your city, not the least of which is nasty polluting industries turning into cleaner, high-tech industries.
- **Health:** This chart helps you keep track of your Sims' Life Expectancies. The higher this level, the longer your Sims live. The longer they live, the longer they work, which means a larger work force.
- **Population:** Here you can see what percentage of your population makes up your work force. You can also see what your city's total population is.
- **Electricity:** This chart shows you a breakdown of the different Power Plant types in your city as well as a breakdown of the percentage of the total power they are contributing. You can also find out how much electricity is used annually.
- **Garbage:** Here you are shown a breakdown of the different methods you are employing to get rid of garbage in your city. You can find out which method is dealing with what percentage of your garbage. How much garbage your Sims are producing annually is also shown here.



GRAPHS



This graph can show you the status of a variety of items over a period of time. You can view the graph in increments of 1, 10, or 100 years, depending on the scope of information you want.

- **Approval Rating:** Global Aura vs. Time
- **Pollution:** Combined Pollution Level vs. Time
- **Crime:** Crime Level vs. Time
- **Residents:** Sims living in the city vs. Time
- **Education:** Education Level vs. Time
- **Health:** Health Level vs. Time
- **Land Value:** Overall City Value vs. Time
- **Traffic:** Traffic Density vs. Time
- **Funds:** Operating Funds vs. Time
- **City Size:** City population vs. Time
- **Commerce:** Sims employed by Commerce vs. Time
- **Industry:** Sims employed by Industry vs. Time
- **Unemployment:** Unemployment Level vs. Time
- **National Population:** National Population vs. Time
- **Power %:** Power Usage vs. Time
- **Water %:** Water Usage vs. Time

CITY DEPARTMENTS





CITY DEPARTMENTS

As Mayor, you must oversee the operation of seven city departments, and therefore you have seven different roles to play. Quite a responsibility! Luckily, each city department has its own advisor; an expert to help you solve problems and make decisions.

It's easy to grow a happy and healthy little town. The trick is to be able to get the big picture, to see how the workings of all the departments are interconnected. As you play, you'll find that every decision you make has widespread effects throughout your entire city.

In the pages that follow, you'll meet your advisors and learn the ins and outs of running each department.

FINANCIAL/BUDGET DEPARTMENT

MEET YOUR FINANCIAL ADVISOR



Mortimer Green; Financial Advisor

Mortimer Green received his Ph.D. in Post-Classical Economics from Grendletown University and accepted a teaching position there. During his tenure, he worked to turn the Economics Department into a now widely respected model of idealized application. His book, "Tightening The Belt: A Primer for Parsimonious Pro Formas" is considered the definitive book on frugality theory. Green left the Ivory Tower to follow his dream of public service. He rarely regrets the decision.

The purpose of the Financial Department is to control income and expenditures in the city. It may sound simple, but it's not. The Financial Department is responsible for funding the city treasury by collecting taxes, enacting certain ordinances, and looking for money-making deals. The aim is to collect at least as much money as the city needs to fund development and pay for city operations. On the flip side, this department is also responsible for controlling city expenses. The other city departments just want to spend, spend, spend and the finance department must keep spending in check.



Money management is the key to a healthy economy, but holding the city purse strings is a thankless job. Know that I'll be there to support you. If you ever want help making financial decisions, just ask for me.

BASICS OF THE FINANCIAL DEPARTMENT

SIMOLEONS

Simoleons are the currency of the SimNation, and are considered legal tender for all transactions. The top goal of any Mayor is to keep Simoleons in the treasury. Your city can carry debt up to a point, but if it gets so deep in debt there is no hope for escape, your Sims will start looking for a new Mayor. Your Financial Advisor will warn you when things start looking grim.

You can always see how much cash you have available by looking at the Information Bar at the bottom of the screen. A running tab of the available cash in your treasury is displayed in the funds section.

If you run out of Simoleons, you will not be able to do any new construction or zoning. If you run out of cash in the middle of a construction project, like building a new road for example, you'll be notified and the project will be cancelled.

Even if you are completely out of cash, certain expenses will continue being paid each month, sending the treasury further into debt. City departments will receive their budget allotments. Ordinance costs will be deducted each month. If you have deals to buy power, water, or garbage disposal services, the monthly costs will still be charged to the treasury.

BUDGETS AND TAXES

Setting Taxes

Taxes are your main source of income. They are broken down by the three basic zone types: RESIDENTIAL; COMMERCIAL; and INDUSTRIAL. Tax rates affect the demand for each type of zone, and determine the amount of income your city collects in taxes.

Typically, when you lower tax rates for any sector, demand for that sector will increase. If you raise taxes, demand decreases.



Lowering taxes gives Sims an incentive to move in to your city, so demand goes up. Just remember that demand is influenced by other things too, not just tax rates. Depending on conditions in the city, lowering taxes can either raise or lower city income. If the tax cut attracts lots of new taxpayers (Sims) to move in, city income may increase even though each taxpayer pays a small amount. But if the tax cut does not attract that many Sims, the city might lose money because now everybody is paying less in taxes.

Raising taxes gives Sims a good reason to move out of your city, so demand goes down. Sometimes raising taxes is a smart thing to do. If you have strong demand, but don't have any cash left to zone for that demand, taxes are probably too low. Raising taxes may either raise or lower city income. It just depends on the current conditions in the city.

Funding City Departments

The Mayor makes the final decision on how to fund six city services. The optimal funding level for each branch changes as the city changes. An over funded branch will waste money. Underfunding causes a loss of effectiveness of the branch, and may even prod the workers into going out on strike.

Education Budget – Pays for equipment, maintenance of schools and city colleges, and pays salaries of teachers and aides.

Public Health Budget – Pays for hospital equipment, building maintenance, and salaries of doctors, nurses, and orderlies.

Fire Budget – Pays for equipment, maintenance of fire stations, and firefighters salaries.

Road Budget – Pays for road and highway maintenance, and keeps roads from falling apart.

Police Budget – Pays for equipment, maintenance of police stations and jails, plus salaries of police officers and wardens.

Mass Transit Budget – Pays for upkeep of train and subway tracks and stations, and pays for salaries of train and subway workers plus bus drivers.

Understanding the Budget Window

The Budget window is where you'll be doing all of your financial adjusting. It can be accessed by choosing the Budget button from within ADJUST & REVIEW button menu on the Main Toolbar.



The Budget window shows you how you are allocating your money for the year. There are two faces to the Budget window: EXPENDITURES and INCOME. To switch between the two, click on the desired button at the top of the window.

The EXPENDITURES window shows you where you're spending the city Simoleons. You'll see the city department budgets displayed, and can change allocations from this window. Each department has an amount of money they are asking for

(indicated by the light blue marker on their slider). The amount you allocate is up to you. For details on other things you're paying for, click on City Ordinances, Neighbor Deals, or Loans.

The INCOME window shows you where the money in the treasury is coming from. You'll see the tax rates you've set, and may adjust them if you like. For details on other sources of income, click on City Ordinances, Neighbor Deals or Business Deals.

The bottom line is, well, at the bottom of the window. If the end of year funds are displayed in black, you're in good shape and should make money at the end of the year. If the end of year funds are in red, you are projected to lose money. That means you have more expenses than income for the year, and will have to use cash reserves in the treasury just to make ends meet. If you don't have enough cash, you'll start accumulating debt. When you're in the red, it is best to start looking for ways to increase your income or decrease your expenditures.



DEALS

Neighbor Deals

You can make money by selling your city's power, water, or garbage disposal services to a neighbor. You'll receive monthly income from the neighbor which is automatically added to your treasury. Just be sure the income you receive more than covers your cost of providing the commodity.

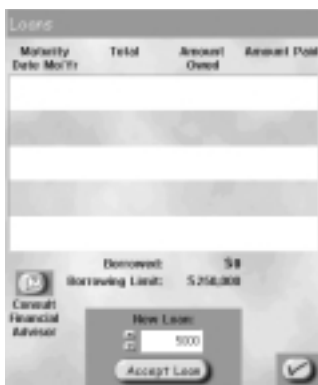
If you contract with neighbors to buy their power, water, or garbage disposal services, you have to pay. A monthly charge will be deducted from your treasury. Try to be sure that the price you pay your neighbor is less than what it would cost to provide these services at home.

Business Deals

From time to time, Petitioners will offer deals to construct certain buildings in your city. Business deals provide the city with a monthly stipend for as long as the building stands. Sounds tempting, except that these buildings bring problems to the city such as high crime, or pollution. If you need cash, they may be worth the trouble.

LOANS

When times get tough, or you are looking for rapid growth, you can take out a loan to raise quick cash.





Here are some facts about loans:

- You may have up to ten loans outstanding at any time.
- A loan can be taken for any reason, and at any time (unless you have ten loans outstanding).
- Loans are available in 5000 Simoleon increments, up to 25K per loan.
- Each new loan is extended for ten years, and cannot be paid off early.
- The city must make annual payments on each loan for ten full years.
- Annual payment amounts are based on principal and interest.
- When the final payment is made in the tenth year, the loan is repaid and comes off the books.
- Total payments made will equal approximately 150% of the original loan amount.

DISASTER RELIEF

In the event of a catastrophic disaster, the powers that be in SimNation may take it upon themselves to assist you in the clean up costs. Be forewarned, a Mayor that is well prepared generally receives better treatment.

STRATEGIES FOR INCREASING CASH

Cutting Expenses

Stop Construction! Zoning and building use up your cash reserves faster than you'd think. When cash reserves are low, build up your treasury before you build anything else.

Cut Budgets! A quick way to cut expenses is to lower the budgets for some or all of the city departments. Be careful though, as the departments will not run as effectively as they can with an adequate budget and this may cause problems in your city. If you cut the budget too far, you may end up with a strike on your hands.

Repeal Ordinances! Most ordinances, when enacted, will cost the treasury a certain amount each month, usually based on population. If the ordinance is repealed, the monthly charge will stop. You can see all your current ordinances



by going to the Ordinance window. Click the box to remove the checkmark and repeal the ordinance.

Review Neighbor Deals! If you're spending money each month to buy a commodity from a neighbor, decide if it's best for the contract to continue. If you think it is best to cancel a contract, try to wait for an opportunity to cancel without paying the hefty penalty.

Raising Income

Raise taxes! Watch that taxes are not so high that everyone leaves town, or you're in real trouble.

Enact Money-Generating Ordinances! A small percentage of ordinances bring monthly income to the treasury. This money comes from groups in the city affected by the ordinance, and they will not be pleased when forced to pay.

Look for Money-Making Neighbor Deals! If you have excess water, power, or garbage disposal capacity, check in the Petitioner window for neighbors who will pay you to supply these commodities.

Accept a Business Deal from a Petitioner! From time to time, Petitioners may approach you with an opportunity to construct a specific facility in your city in return for cash. These generally come with strings, you make the choice.

Take Out a Loan! Even though you have to pay back the money, plus interest, loans are a quick way to build up the treasury. If you use the money wisely, paying back the loan shouldn't be too painful.

FINANCIAL ADVISOR Q&A

Q: Easy question for you: How do I make money?

Mortimer: The easy answer is: you never spend more than you make. The truth is, there is no easy answer. You need to take certain risks when expanding your city. If you never expand, there is no way to increase funds. Sure you can play the tax game, where you raise and lower taxes to bring in and then drain new Sims. That's a dangerous game to play, though, because eventually they will catch on and perhaps not be so willing to move to your city at the drop of a hat. Playing with ordinances and cutting deals with neighbors can be a way to steadily increase cash.



Q: You mentioned playing with taxes. How do I do that?

Mortimer: The Income section of your Budget window has the tool that allows you to adjust the Tax Rates for the three major zone types. It's important to remember that not a single Sim likes living in a town that is "sticking it to them" in the tax department. That's what makes it a game of sorts. Lowering the tax rate will bring Sims in, but if you raise it back up too high, they will all leave. I think you'll agree with me when I say we Sims are a fickle bunch.

Q: When should I take out loans?

Mortimer: Whenever you are looking for quick growth and need some money to do so, or if you need some money to make repairs on your city after a disaster. I wouldn't take out a loan just for the sake of doing so. Have a plan for the money and make sure it is well spent. This is because you will end up paying back more than you borrowed so you don't want to spend the money foolishly.

Q: I find it hard to believe that a Mayor has to do his own finances year after year.

Mortimer: Actually, as a Mayor, you can set the budget up a certain way and it is up to your Financial advisor to see that your requests are carried out and they stay status quo year after year. This feature is available by turning AUTO BUDGET on in the Preferences window. As long as Auto Budget is on, all of your Budget window settings will remain unchanged and the Budget window will not pop up year after year. As soon as your finances go into the negative, Auto Budget will be turned off. This way you can hopefully recover before things get too out of hand.



TRANSPORTATION DEPARTMENT

MEET YOUR TRANSPORTATION ADVISOR



Moe Biehl; Transportation Advisor

In contrast to his folksy demeanor, Moe Biehl is a well-connected political insider. His credentials, never independently verified, include Alderman, Ombudsman, Councilman, Chairman, Elector (appointed), Sergeant at Arms, and Minority Whip "There isn't a function of city government I don't know something about," he admits. Moe feels right at home as Transportation Advisor, despite accusations that he has never set foot on a bus, subway or train in his entire life.

Even if you create a city with the nicest houses or cheapest office space, no one will move into your city if they have no way to get around. Sims need to get from one place to another and they are only willing to walk so far. The Transportation Department is where all of that is handled. It covers everything from roads and rail lines to tunnels and bridges. When you build a city, this aspect is one of the first you will want to consider. If you lay out an inadequate transportation system, you can have real problems in the long run. Suppose you have a busy downtown that needs a larger road due to bad traffic. This is going to be a problem when you look at the area and see that skyscrapers line the small road.

There are mass transit systems that can help eliminate traffic, so you are rarely stuck with only one solution to a bad transportation system. Just think ahead and you should have few, if any, transportation problems.

BASICS OF THE TRANSPORTATION DEPARTMENT

BUILDING YOUR TRANSPORTATION SYSTEM

A transportation system can be based on private transportation (meaning roads for cars), or public transportation (meaning trains, subways and busses).

Most Sims prefer to drive their cars, so if roads are plentiful, more Sims will be willing to live in your city, especially when the city is small. But if you rely solely on roads, you'll find that as the population grows, traffic problems become horrendous.



Public transit gets cars off the street, and keeps the air cleaner. It's the right thing to do for your city. In fact, it's difficult to build a large city without using any public transit at all. When planning your public transit routes, be sure that they are convenient, or your Sims won't use them. Certain ordinances provide incentives for Sims to forego their cars in favor of mass transit.

Building Travel Routes

To place a transportation route, click on the Build Transportation button menu in the Main Toolbar. Select the desired type of route, e.g. Roads, Highways, Rails, or Subway Rails. Your cursor will change into an icon of the chosen route type. Click and drag a line where you want the route to be placed. The Drop Shadow will be blue as long as you are placing the route in an area where one can be constructed. If you are attempting to build a travel route where one cannot be built, the Drop Shadow will change to red and your construction attempt will be cancelled.

If you hold down the **SHIFT** key before releasing the mouse button, the placement of any route will be cancelled.

ROADS AND HIGHWAYS

Roads are two-lane paved routes that Sims like to drive on, but you probably knew that already. Zoom in close to see traffic flowing through your city, and curb traffic problems before they develop.

Highways are basically elevated, high capacity roads. They allow Sims to travel more efficiently over long stretches of terrain, so if you want to connect two very distant zones, highways are a good choice.

INTERSECTIONS AND ON-RAMPS

Intersections allow your Sims to drive off of one road and onto another. They are usually trouble-free, though if traffic is heavy, intersections can become bottlenecked with Sims trying to merge.

When you build a road that crosses an existing road, city engineers will automatically create an intersection for you.

Highways may be built over roads, but if you want your Sims to be able to get from one to the other, the intersection requires an on-ramp. On-Ramps allow your Sims to get on and off highways.



To build an on-ramp, use the on-ramp option from within the HIGHWAY button. Click on a tile at the corner of the intersection of a road and highway or highway and highway. The city engineers will construct the on-ramp.

BRIDGES

You can build roads, highways and rails across water. Your city engineers will automatically be notified to build a bridge for you. The main thing to remember is “don’t be disheartened by the red Drop Shadow as you move the mouse over water, just have faith and keep dragging until you reach dry land again.” When the mouse is back on land, the Drop Shadow will turn blue again. When you release the mouse button the city engineers will notify you of the cost of the proposed span, if you accept, the bridge will be built.

Causeways are built over short spans of water. Suspension bridges are built over large spans of water.

TUNNELS

When you’re building a road or rail in mountainous terrain, your omnipresent team of city engineers may suggest you bore a tunnel if the incline is too steep. This will happen automatically if you drag the selected Drop Shadow to a point where the incline is too steep to simply cross over. Your team of city engineers will inform you of their ability to construct a tunnel and the cost. If you accept, they will bore the tunnel for you.

MASS TRANSIT

Busses

Bus stops must be placed along the side of roads to be effective. If you place bus stops and Sims don’t seem to use them, they may be too far apart.

Trains

Setting up a rail system is much more expensive than roads in both money and time, but the reduction in traffic and pollution can make it extremely worthwhile. Simply laying track will not be enough to get things working. Once the track is laid, you must place Train Stations on tiles that touch the track. This tells trains where to stop, and where Sims can get off and on the train.



Subways

When you select the Lay Subway Rail tool from the BUILD TRANSPORTATION button menu the City View will automatically switch to the underground view where you lay subways. In this view you will be able to make out areas above ground that are zoned, developed, or are roads. You will also see the below ground portions of subway stations or subway to rail stations.

Subway stations must be placed next to subway rails to be effective. This can be done in either the above ground or underground view.

Subway to Rail Connection

This station allows Sims to transfer from rail to subway, making your city's Mass Transit options more versatile.

FUNDING ROADS AND THE MASS TRANSIT SYSTEM

The road budget pays for maintenance of all roads, highways, bridges, and tunnels in the city. Roads, especially well-traveled routes, will begin to fall apart if they are not maintained. This causes Sims to have to take alternate routes, and if the commutes become too difficult you may find Sims leaving town.

The mass transit budget pays for the upkeep of rail and subway track, and also the salaries of conductors, and bus drivers. If the mass transit budget is low, things will start deteriorating and Sims will be less likely to use the system. If the budget is far below adequate, transit workers will go out on strike.

CONNECTING TO NEIGHBORS

Making connections to neighboring cities helps your Industrial sector by creating a way to export goods to other cities. Inter-city connections help your Commercial sector as well, by opening up the borders so new customers can visit and shop. And only when connections are built will you be able to contract with neighbors to buy or sell garbage disposal services.

To create a land connection, build a road, highway, or rail line right to the city border. If you tell your city engineers that, yes, you are willing to pay for a connection, then one will be built. You can have connections of all types to all neighbors.

Seaports and airports are considered connections to all neighbors.



TRANSPORTATION ADVISOR Q&A

Q: What makes for a good transportation system?

Moe: A good transportation system will get Sims wherever they want to go whenever they want to go there. That doesn't just mean building roads all over the place; that includes mass as well as private transportation. Remember, Sims will only travel so far when looking for some form of transportation. If they cannot find any, they simply will move somewhere more suitable and sometimes that means moving out of the city. That doesn't mean you can build a road tile and assume Sims will move in, travel routes have to take them where they want to go.

Q: It seems like it'd be easier to build a ton of roads. Why should anyone bother with mass transit?

Moe: Sims love their cars, there's no denying that. But let's think about something for a second. When the only way to get from place to place is via car, then that's how everyone will travel. If every Sim in the city is driving their own car, there is going to be an unreasonable amount of traffic on the roads. Sure you can put ordinances into effect that promote carpooling, but that won't cut it if your population gets large enough. Also, think of it like this: Sims aren't willing to drive as far if traffic is bad. That means that you are forced to make a tiny congested city with no real hope for expansion. When mass transit is introduced, Sims tend to get their cars off the road. Fewer cars means less traffic and less traffic means Sims are willing to travel further, not to mention the benefit of cleaner air. If you can get a good rail system going, then you can eliminate even more pollution while creating a way for Sims to travel even further.

Q: So what stops me from putting Bus Stops and Train Stations every 10 feet?

Moe: Only money, I guess... It can be expensive to maintain these transportation systems and the more stopping and going and plain old wear and tear, the more expensive it will be. Besides, would you want to ride a bus that stopped every 10 feet?



CITY PLANNING DEPARTMENT

MEET YOUR CITY PLANNING ADVISOR



Constance Lee; City Planning Advisor

Constance Lee has an infectious energy that bolsters everyone around her. Her professors at San Bolima State College of Urban Design remember her as one of their brightest, most hard-working students. Accepted into the City Planning Commission Office right out of college, Constance rose quickly to the top of her profession through sound judgement, quick learning, and cheerful enthusiasm for serving in city government.

The function of the City Planning department is to oversee the layout of the city. Your role is to grow the city by zoning parcels of land for different purposes. You must make sure to maintain a good balance of the various types of zones, and see that they are developing as planned.

Your Sims will continually be judging your city planning decisions. When things are going well, Sims will be clamoring to live and do business in your city. On the other hand, they are quick to complain when things are not to their liking, and will leave as fast as they arrived.

Planning a city may well be the most difficult task of being a Mayor. You can rely on me to help you solve problems as they arise.

BASICS OF THE CITY PLANNING DEPARTMENT

UNDERSTANDING ZONES

Zones are areas of the city that you designate for a specific use. Every city must contain the three main types of zones: Residential, Commercial, and Industrial (called RCI) because every city needs a place for Sims to live, to shop, and to work.

Sims will only build on areas of the city that are zoned. The buildings they choose to construct in a zone depend on the type of zone, the density of the zone, and the land value.

Zoning an area does not guarantee that Sims will build there. Sims will only develop zones that are in demand (see the RCI Demand Indicator for more



information), and that are usable. A usable zone has power and adequate transportation to other zones. Having water helps tremendously, light density zones can develop without it but water is a necessity to sustain medium to dense zone development.

Residential, Commercial, and Industrial zones are called RCI zones.

TYPES OF ZONES

Residential Zones

This is where your Sims will live. Keep in mind that every Sim needs a place to call home, so don't be surprised to find your city needs more Residential Zones than any other type of zone.

Residential areas can be zoned light, medium or dense. The density of the zone influences the type of buildings that get constructed. If you want huge apartment buildings, build Dense Residential. Townhouses are built in medium density areas. And for single-family homes, choose light density. The higher the land value, the nicer the properties will be.

Commercial Zones

This is where your Sims shop, and where some of them work. Office buildings as well as stores of various shapes and sizes are located within Commercial zones. The type of Commercial buildings that get built depends on the density of the zone, as well its land value. Large stores and office buildings will come with the higher densities. You'll need light or medium density Commercial zones to let the small business Sim get a foot in the door. The demand for Commercial zones typically rises as a city ages. Keep your eye on the RCI Demand Indicator to see what the trends are.

Density sets the maximum density for a zone. Land value of the zone must be very high in order for full density to be reached.



Industrial Zones

Industrial zones define areas where manufacturing, agriculture, and high-tech enterprises can do business. Young cities normally attract heavy polluting industries, especially in dense Industrial zones. Sometimes farms will develop in light density Industrial zones that are far from the hustle and bustle of the city. As your city ages and you raise the education level of your Sims, you may be able to attract cleaner, high-tech industries.

Airport Zones

Airports help your Industrial and Commercial districts to grow by bringing in tourists and workers, as well as making your city more accessible to the outside world. Just like RCI zones, you zone for airports and wait for Sims to develop them. Available in 1930, airports must be at least 3x5 tiles or larger in order to develop. They also require power, water and a road nearby. They will only develop as your city grows and requires outside sources for commerce and industry.

Seaport Zones

Seaports help your Industrial and Commercial sector to grow by providing a means to transport goods to the outside world. They also allow your city to make deals to import or export garbage to neighboring cities (though rail connections can provide the same service). Seaports must be zoned at least 2x6 tiles or larger in order to develop. They require power, water, and a road nearby. They must be located along a shoreline to do anything, but if you want to see real results, build one on a seacoast.

Landfill Zones

All cities create garbage, and one option for dealing with garbage is to zone a landfill. Landfills decompose garbage at a fairly slow rate and have a maximum capacity dependent on their size. Once a landfill is full, garbage will accumulate around the city unless you have other means in place to dispose of it. When zoning landfill, remember to lay a road near it so trucks have a way to carry garbage from parts of the city to the landfill.



HOW TO ZONE

First you must chose a zone type. Click on the **ZONE** button on the Main Toolbar to display buttons for the various types of zones. Click on a button to select a zone type, and your cursor will change shape, indicating that you may begin zoning.

Residential, Commercial, and Industrial buttons have a density submenu. If you click one of these buttons without viewing the submenu, the last chosen density will be active. To view or change the density, click and hold the mouse button down on the button of choice. A submenu of density choices, **LIGHT**, **MEDIUM** or **DENSE**, will pop up. Click on a density to select it. Your cursor will change shape and you can begin zoning.

To begin zoning, click and drag the cursor over a section of land. (You can do single clicks if you prefer.) When the mouse button is depressed, you'll notice the area is highlighted with a **DROP SHADOW**. The Drop Shadow shows you where you're about to zone. The cost of laying the zone is displayed as well, and updates as you increase or decrease the size of the zone. When you release the mouse button, a colored zone will replace the Drop Shadow and the cost will be deducted from your operating funds.

You may cancel a zone in progress if you hold down the **SHIFT** key before releasing the mouse button.

If you zone an area and later change your mind, you can zone over it, or you can use the De-Zone tool to return the land to its pristine, un-zoned state.



RCI DEMAND INDICATOR

The RCI Demand Indicator gives you a constant readout of the demand for Residential, Commercial, or Industrial zones. The bars rise up when there is demand for a particular type of zone, and drop down to show oversupply.

When demand for a zone, such as Residential, is high, you should zone more Residential. The RCI Demand Indicator will not tell you what density to zone;



you'll have to choose a density based on your evaluation of the city and where you plan to add the new zone.

LAND VALUE

The nicer a place is to live or work, the higher its land value. Land value is influenced by many factors, including pollution levels, crime levels and the availability of convenient transportation. Land values in Residential zones particularly are affected by proximity to desirable buildings or services (schools, hospitals, parks) or undesirable buildings or services (landfills, incinerators, or NIMBY "Not In My Back Yard" buildings such as the Toxic Waste Conversion Plant).

Land value fluctuates as conditions in the area change. As land value changes, buildings that occupy a zone will be replaced with other buildings. Rising land values allow zones to develop to higher densities, represented by taller, more exclusive buildings.

To find out the land value of a particular building or piece of land, select the QUERY tool from the ADJUST & REVIEW button menu and click on your selection. Land value is included among the many details of the query information window.

CITY PLANNING MAPS, GRAPHS, AND QUERIES

Certain maps and graphs can give you a broad overview of your city planning progress. Maps most helpful to a city planner are:

- Land Value
- Density
- Zones

To see these maps, click the ADJUST & REVIEW button menu on the Main Toolbar, and select View Data to see a list of available Maps, Charts and Graphs.

Another good source of information comes from using the Query tool. Click the Adjust & Review button menu and select Query. Then click on any building or zone to see up-to-date status information.



CITY PLANNING ADVISOR Q&A

Q: I've laid down the first zones in my new city but nothing's growing. What should I do?

Constance: Start the simulator. No development can take place when the simulator is paused.

Q: The RCI Demand Indicator shows a high demand for Residential, but I have a Residential zone that's not developing. Why?

Constance: The RCI Demand Indicator shows the need for zones that are usable, meaning they have an infrastructure in place. Hook the zone to power, water, and the transportation system and it should start developing quickly.

Q: What density should I make my zones?

Constance: Stick with light and medium density zones to start with. Paying for costly dense zoning doesn't make much sense until your population starts booming and land values rise.

Q: Do zones have to be close to other zones?

Constance: It depends. Sims don't like to travel too far. A Residential or Commercial zone won't develop if it's beyond a reasonable commute distance from other zones. But an Industrial zone on the outskirts of town could develop into a farm. Transportation is the key; Sims may move in, but if the commute becomes tiresome they'll move right back out.

Q: I've seen large zones that don't grow except on the outer edges. Why is that?

Constance: It's all about transportation accessibility. If you build a large zone, there is no way for Sims to get to the inner areas. As long as some form of transportation isn't too far away from where you've zoned, Sims will move in. They are more likely to move in if there are roads... Sims love their cars you know!

Q: Why do I have slums?

Constance: There are many factors that contribute to the existence of slums,



but they all boil down to one simple thing: Land Value. High crime and pollution will lower the land value of any area. Being too close to a landfill or other undesirable area also lowers land value. It's not a bad thing to have low income housing, but if it is dominating your city, you may want to reevaluate.

Q: I zoned too much Residential and the RCI Demand Indicator shows an oversupply. What now?

Constance: You have several options. You could zone over some of your Residential zones, replacing them with zones that are in demand. You could de-zone some of your Residential. Or you could leave your Residential zones alone and concentrate on building up other zone types, and hopefully attracting more Sims to the city to use up the oversupply of housing.

Q: Some of my buildings look dark and empty. Why did the Sims leave?

Constance: Sims will abandon buildings in a developed zone when conditions warrant it. They are likely to leave if power, water or transportation to the zone is cut off. If you fix the problem, Sims may come back and restore life to the buildings. The only time Sims won't return is when an area has been contaminated by radiation from a nuclear explosion. Too dangerous.

Q: Can I build something in un-zoned areas?

Constance: Yes! An un-zoned area cannot be powered or watered, so Sims won't build anything there, but you can. Individual buildings that are offered in the Main Toolbar (power plants, schools, landmark buildings, etc.) can be placed anywhere on your city map. Neat, eh?

Q: My RCI Indicator shows no demand, how do I continue to grow my city?

Constance: In order to lead productive, happy lives, Sims need to be able to sell the goods and services they produce and relax when they are not busy working. When growth stalls, it generally means that your city has reached a threshold for one or all of these requirements. In order to allow your city to grow further you must look for new outlets for the sale of your goods and services and more ways for your Sims to enjoy themselves in their spare time. Connections to your neighbors provide a means to get your economy moving forward again, and entertainment centers are a great way to encourage new Sims to come and play, and hopefully stay.



ENVIRONMENTAL DEPARTMENT

MEET YOUR ENVIRONMENTAL ADVISOR



Karen Frawl; *Environmental Advisor*

Karen Frawl describes herself as an overachiever. As if to prove the point, she earned simultaneous degrees from the University Of Heckford Falls (Eco-Statistical Analysis) and Le Academe d' Chateau a Villeau (Comparative Literature). She continues to travel extensively, and regularly attends environmental "proof-of-concept" demonstrations in test cities all over the globe. She blends a compassionate vision with a practical application of new technologies and methods. When not traveling, she spends time with her twelve cats.

The function of the Environmental Department is to handle the city's garbage and keep pollution in check. When you reduce garbage and pollution, you make the city a better place to live, and a place where happy, healthy Sims are more likely to live longer.

Environmental problems may not seem a top priority at first, but I warn you not to ignore them for too long or you'll see all sorts of problems crop up. Problems such as garbage in the streets, low health levels, and a reduced water supply can all be attributed to a neglected environment.

Starting early to keep your city clean and pollution-free will help the entire SimNation in the long run. Remember, you can count on me for help and encouragement.

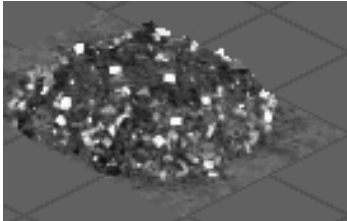
BASICS OF THE ENVIRONMENTAL DEPARTMENT

TRASHING GARBAGE

Trash happens. You simply can't stop Sims from generating it. Though there are ways to reduce the amount of trash Sims produce, you can't eliminate it completely. You must find a way to dispose of trash or reduce the amount you must dispose of through Recycling Centers. Your disposal alternatives are to dump it in landfills, burn it, or ship it out of town.

If you don't provide a means for your city to dispose of garbage, Sims will be forced to dump their trash right out their window and you'll be able to see it pile up. It isn't pretty.

When garbage levels get very high, health levels drop dramatically (lowering Life Expectancy) as will the overall happiness of the Sims. It won't take long for everyone to find a cleaner city in which to live.



Landfills

If you want to bury your city's garbage, you need to zone landfill space. Landfills slowly decompose garbage that is buried there, but they are not black holes; overused landfills will reach a point where they can't handle any more trash. When a landfill is full, garbage will accumulate around the city unless you have other means in place to dispose of it.

Put some thought into choosing a landfill site. Landfills don't make good neighbors. They stink up the air and cause surrounding land values to plummet, so choose a spot far from Residential and Commercial zones or Sims will complain. Remember to lay a road near the landfill so dump trucks can get there. If they can't dump the garbage at the landfill, it may end up dumped in the streets.

If you're having trouble with a landfill and you think bulldozing it will solve the problem, think again. You can't bulldoze over landfills; however, you can decommission them by removing road or rail access. Over time the landfill will decompose all of its accumulated garbage, at which time you can de-zone it.

Incinerators

Municipal Solid Waste Incinerators get rid of garbage by burning it. Unfortunately, they are nasty metal monsters that spew out lots of air pollution and ash. Sims don't like them, and they especially don't like them built in their backyards.

Waste-to-energy incinerators are not any kinder to the environment. They have a greater disposal capacity and actually create electricity by burning garbage that



can be used to supply power to your Sims. The catch is that they are expensive to build, and like all new toys, must be invented before you can play with them.

Both incinerators become less efficient as they age. You can check on their disposal capacity by querying them.

Like landfills, incinerators need to be near a road so garbage trucks can deliver garbage to them.

Recycling Centers

Recycling centers can significantly reduce the amount of trash that Sims produce. It's much cheaper to recycle trash than it is to dispose of it, so build a Recycling center as soon as they become available. These centers pay for themselves quickly, and no city should be without one.

Each recycling center can only deal with a limited amount of garbage, so large cities should have them in multiple locations for maximum effectiveness. Enact the Trash Presort Ordinance and you'll raise the efficiency of all recycling centers.

NEIGHBOR DEALS

Mayors from neighboring cities may approach you from time to time with offers to dispose of your garbage for a price, or offers to pay you to take their garbage and dispose of it for them.

Garbage deals are only available if you have built connections to neighboring cities. Transporting garbage in or out of your city requires a road, highway, rail, or seaport connection. When a deal of either type is in place, open the Neighbors Window from the ADJUST & REVIEW button menu to check up on it.

Exporting Garbage

An easy, but sometimes expensive, way to dispose of garbage is to pay a neighbor to haul it all away. Each month, a contracted neighbor will take all your excess garbage (meaning any garbage that your city's landfills and incinerators cannot handle); and each month, funds are deducted from your treasury based on how much garbage they took.

If you don't generate any excess garbage, you still have to pay a minimum fee. And there is a large penalty for canceling the deal.



Importing Garbage

If you have excess landfill space or incinerator capacity, you can make a deal to dispose of a neighbor's trash. Each month, a set amount of trash will be added to your city's garbage. And each month, you'll receive a cash payment.

If your garbage disposal services become overloaded and you want to cancel the deal, you'll be charged a large penalty.

Air Pollution

While you can't see air pollution, you'll notice its effects. Air pollution lowers land value and health levels in the city and that makes Sims quite distressed. Many things contribute to air pollution. The two biggest culprits are heavy traffic and smokestack industries. If you can encourage mass transit and clean industries, you are well on your way to solving your city's air pollution problem.

The addition of trees and parks helps to clean the air a bit, as will any "clean air" ordinances you can activate.

WATER POLLUTION

Invisible contaminants, primarily from industry, can invade your water supply. When this happens, pumps lose efficiency, and Sims complain loudly about smelly, greyish colored drinking water and falling health levels.

Water treatment plants can mitigate minor water pollution problems, but to attack the source of pollution, you must go after polluting industries. Enact clean water ordinances that offer tax incentives to encourage non-polluting, high-tech industries to replace heavy manufacturing firms.

ENVIRONMENTAL MAPS, CHARTS, AND QUERIES

Certain maps and graphs can give you a broad overview of the state of your environment. Maps and charts most helpful are:

- Pollution
- Water
- Garbage Chart
- Global Pollution vs. Time graph



To see these maps, click the ADJUST & REVIEW button menu on the Main Toolbar, and select VIEW DATA to see a list of available maps, charts and graphs.

Another good source of information comes from using the query tool. Click the ADJUST & REVIEW button menu and select QUERY. Then click on your landfill or incinerators to see up-to-date information on their capacity.

ENVIRONMENTAL ADVISOR Q&A

Q: How can I tell if my garbage or pollution is getting out of control?

Karen: Well, it's easy to tell if garbage is getting out of control because you'll see it start to pile up in the streets. Pollution is a little more subtle, but can be just as harmful. You should keep an eye on the Pollution map so you can see just how things are looking.

Q: What makes garbage and pollution pile up?

Karen: As Sims, we create an absurd amount of garbage every day. If you don't have someplace to dispose of the garbage, it will just build up on streets and lawns everywhere and I don't have to tell you how unhealthy that can be. Pollution builds up when traffic is bad or when there is a lot of heavy industry. Their billowy smokestacks pump a large amount of pollution into the air.

Q: How can I reduce the amount of garbage in my city?

Karen: There are various ways to dispose of your trash. This could mean having a landfill, incinerator or you could buy disposal services from your neighbors. A recycling center will help reduce the amount of trash you need to dispose of.

Q: What about lowering pollution?

Karen: Cut back on traffic and discourage polluting industries. It also helps to have a lot of trees in your city as they help clean the air to a degree. I hear work is being done on a structure that removes pollutants from the air, but that looks to be a ways off.

PUBLIC SAFETY DEPARTMENT

MEET YOUR PUBLIC SAFETY ADVISOR



Maria Montoya; Public Safety Advisor

Maria Montoya dedicated her life to public safety at age eight when fire destroyed her family home. She graduated from the Cornwrath Police and Fire Academy with top honors. Her senior thesis, "Advanced Theories of Urban Geographic Response Route Calculation" earned her high public acclaim and her first job, assistant warden at Hollyview Women's Prison. It was not long afterward that she made the move to city services, working her way up the managerial ranks. Throughout her career Maria mixed a no-compromise stand on safety with a dogged insistence that the Sims in her department have the necessary resources to do their jobs right.

The Public Safety Department is responsible for providing police and fire protection to the city. In addition to overseeing day-to-day operations, the department must be prepared to respond immediately to any disasters that strike.

Sims expect a certain level of safety when they move to a city. If high crime forces them to cower behind closed doors, or if no one answers their calls when a fire breaks out, Sims' survival instinct takes over and they will leave town. On the other hand, good police and fire coverage raises land values in a city, which makes Sims happy and proud to be citizens.

Your job is to see that the Sims in the city are protected. I'll be around to remind you if they are not.

BASICS OF THE PUBLIC SAFETY DEPARTMENT

POLICE AND CRIME

Crime is a fact of life in any city, but it can and should be kept to a minimum. High crime in a neighborhood lowers land values and makes law-abiding Sims very unhappy.

You can deal with crime from several angles. First, provide adequate police protection in your city. Police presence alone deters crime, and when crimes do occur, officers can arrest the offending Sims. Second, don't encourage crime with crime-attracting buildings like casinos.



POLICE PROTECTION

Police stations provide protection in a radius around each station called a “precinct.” The size of a precinct expands as you raise the police budget. Criminals can roam free in any area that is not covered by a precinct, so try to place police stations in strategic areas around your city.

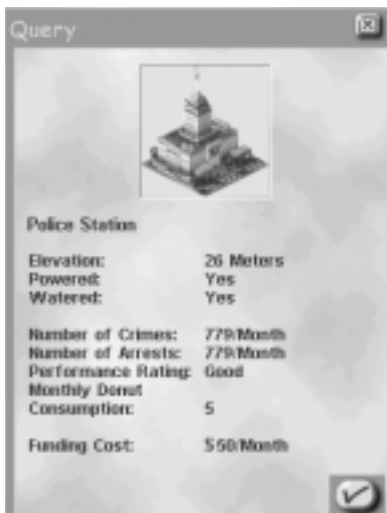
Funding not only affects a precinct’s size, but also its effectiveness. Police effectiveness is the likelihood that a criminal who commits a crime within a precinct will get caught. Effectiveness is always highest in a small radius around the police station, and starts to fade farther away from the station. As police funding increases, police effectiveness throughout the precinct rises.

Police stations placed near one another may have precincts that overlap, and effectiveness in these overlapping areas is additive.

Criminals that commit crimes outside of a police precinct will not get caught.

The Police and Crime map shows the location of police stations and the effectiveness within the precincts, as well as areas of high crime in the city. Use this map to find the best spots to place new police stations.

You can use the query tool to get details on how any individual station is doing.





Jails

Jails are where convicted criminals are put to pay their debt to society. If you do not have enough jails in your city, the police will be forced to release any new criminals they catch back onto the street. Keep enough jails around or your police effectiveness will drop.

Sims don't like living near jails, so build them away from Residential neighborhoods.

Lowering Crime

The best way to lower crime is to add police protection (either by placing additional police stations or by raising the police budget), and by placing jails if needed.

High land value goes hand in hand with low crime. The more you can do to make your city a more desirable place to live, the fewer crimes will occur.

Enacting some ordinances can reduce crime, though you should weigh the cost of the ordinance against the cost of providing additional police protection. Be aware that some ordinances, like some buildings, tend to increase crime levels.

Dispatching Police

When an emergency occurs, you may manually dispatch a police squadron to any area in the city. The number of squadrons you can send at any one time is equal to the number of police stations in the city plus one. You always have at least one dispatch, even with no police stations.

When an emergency arises in an area with sufficient police coverage, you probably do not need to dispatch additional police. You still may want to though, especially for larger disasters.

To dispatch a police squadron, click on the DISPATCH POLICE button within the EMERGENCY button menu and then click on any location in the city. The officers arrive immediately and go straight to work. A police dispatch pylon will mark their location.



FIRE

Fires occur at random locations, but fire coverage is systematic. By having fire stations placed strategically throughout the city, you can rest easy knowing that if a blaze does break out, you have everything set up to solve the problem without your intervention.

When a fire is so bad that it demands your personal involvement, you can dispatch firefighters to the scene. Or you can bulldoze a firebreak around the blaze to try and contain it. What you can't do is turn off disasters when a fire is already in progress.



Fire Protection

Each fire station you place provides a radius of fire protection around it. The size of the coverage area expands up to a limit as you raise the fire budget. Though a fire is just as likely to break out in an area with fire protection as in one without, fires in protected areas are less likely to do any damage because firefighters respond immediately.

Funding not only affects the size of the coverage area, it also influences the effectiveness of firefighters within a covered area. Firefighter effectiveness is the likelihood that a fire that breaks out in a protected area will get put out before



damage occurs. Effectiveness is always highest in a small radius around the fire station, and starts to fade the farther away from the station. As fire funding increases, firefighter effectiveness rises.

Fire stations placed near one another may have coverage areas that overlap, and effectiveness in these overlapping areas is additive.

The Fire and Flammability map shows the location of fire stations and their coverage areas. It also shows areas at high risk of fire. Use this map to find the best spots in your city to place new fire stations.

You can use the query tool to get details on how any individual station is doing.

Dispatching Firefighters

When an emergency occurs, you may manually dispatch a unit of firefighters to any area in the city. The number of units you can send at any one time is equal to the number of fire stations in the city plus one. You always have at least one dispatch, even with no fire stations.

When an emergency arises in an area with sufficient fire coverage, you probably do not need to dispatch additional firefighters. You still may want to though, especially for larger disasters. Firefighters can help to some extent no matter what type of disaster occurs. For example, they are very effective dealing with fire, but not so great at quieting rioters.

To dispatch a fire fighting unit, click on the DISPATCH FIREFIGHTERS button within the EMERGENCY button menu and then click on any location in the city. The unit arrives immediately and firefighters go straight to work. A fire dispatch pylon will mark their location.

Flammability

Flammability is a measure of how easily something will burn. All buildings in your city have an inherent flammability rating, which you can see if you query the building. The higher the rating, the more likely that building will be consumed by fire if one occurs.

The most effective way to reduce the flammability of a building is to see that it is receiving water, meaning that it is located on a watered tile. To be watered, a tile must be located within seven tiles of a water pipe that is supplying water. Try to



see that all buildings in your city sit on watered tiles. The reduction in potential fire damage is significant.

Ordinances can be enacted to reduce the global flammability level in your city.

DISASTERS

Predicting Disasters

Disasters occur at random, but sometimes you may see hints that they're coming. Keep your eye on your News Ticker.

Early Warning Siren

Though you can hope for the best, it is always best to prepare for the worst, especially if that worst is a tornado or an alien attack. If you can get your Sims off the streets and inside before a disaster strikes, the damage from the disaster will be much less. Activate the Early Warning Siren and they will heed your warning and take cover.

You are the only one who can control this siren, and you should not abuse the privilege. If you activate the siren when no emergency is imminent, Sims will start to doubt you and may not respond when the need is real. This is all well and good until you actually are trying to help them, so tease with caution.

When Disaster Strikes

Fires and riots are the only disasters where you can make a difference by dispatching fire and police units. It doesn't matter how many police officers you send to an earthquake or alien attack, it won't make any difference once the disaster hits, though the Early Warning Siren helps if activated beforehand.

If, for some reason, you actually want a disaster to occur, select START Disaster button from within the EMERGENCY button menu and pick your means of destruction.



PUBLIC SAFETY ADVISOR Q&A

Q: How do I lower crime?

Maria: Possible ways to lower crime include enacting anti-crime ordinances, keeping land values high, building jails, and the most obvious answer, having well-funded police stations built in strategic areas around your city. Check the Crime and Police map for help choosing the best sites.

Q: How do I provide fire protection?

Maria: Build fire stations, and then be sure your fire budget is well-funded. Again, it's all about arranging the proper number of fire stations for the city's needs. You can always check the fire coverage map if you are unsure as to what is protected and what isn't. You can also enact several ordinances that will reduce the risk of fire.

Q: Ok, so what happens when a disaster hits?

Maria: It depends on the disaster. The trick is to consider what kind of disaster is going on and then decide what department is best suited to handle the problem. Let's take a fire as an example. The first thing you want to do is get the fire department out there to start containing the fire. If, for some reason, you haven't prepared for anything and have neither police nor fire protection, then your city is at risk of being destroyed.

Q: A fire broke out but I was only able to dispatch a single fire truck.

Maria: That is because you have no fire stations, and therefore, had to rely on your volunteer brigade. If you want to be able to dispatch more units, you must build fire stations. You will have one dispatch unit for each fire station you build, plus one for the volunteer group.



HEALTH, EDUCATION AND AURA DEPARTMENT

MEET YOUR HEA ADVISOR



Randall Shoop; HEA Advisor

Eschewing the traditional academic route, Randall Shoop received a Certificate of Completion in general studies from Gonzo Community College. He landed an internship with the Jackersville department of Social Services, learning his profession, as he likes to say, from the ground up. Ten years ago, Randall founded the “Urban Paradise” movement, a group that believes cities themselves are living entities; two years ago he renounced the movement. Probably due to his natural sensitivity to the plight of those less fortunate, Randall’s input on matters of social welfare is sought after all over SimNation.

The Health, Education and Aura (HEA) department focuses on the overall quality of the Sims lives. The health aspect involves how long Sims are living as well as their relative health while they are alive. The education branch makes sure the Sims are getting the schooling they need and want. Aura is the general “feel” of the city and reflects the overall happiness of the Sims.

Keeping Sims happy is a tough job, but when they’re pleased with your work, they’ll give you special buildings as gifts. I’ll do everything I can to help you. Being a Sim that lives in your city, helping you helps me, too.

BASICS OF THE HEA DEPARTMENT

IMPROVING SIM HEALTH

Good health brings long life, and that makes Sims happy. The average Sim living in the average city, can expect to live to an average of fifty-nine years. But who wants to be average? If you take steps to raise the health levels in your city, you can increase the Sims’ life expectancy as high as ninety years.

The key to raising health levels is to build plenty of hospitals in the city. Hospitals need to be easily located in easily-accessible areas, and more importantly need to have adequate funding.

The importance of healthcare funding cannot be overstated. Insufficient funding reduces the number of healthcare workers and, therefore, patient care will suffer. Sick and injured Sims will be denied hospital stays due to lack of beds; all



requests to see specialists will be flatly refused. It doesn't take long for health levels to drop when funding is cut. If funding levels wallow in inadequacy for an extended period of time, you not only damage health levels, but risk your healthcare workers calling a strike. Strikes cause hospital efficiency to plummet, and drag down health levels even further.

Unfortunately, even with plenty of well-funded hospitals, city health levels are constantly pulled down when air and water pollution are present. In order to raise life expectancies to any great extent, pollution and traffic must be kept in check.

And finally, enacting pro-health ordinances can give Sims a healthy shot in the arm.

HOW SIMS LEARN

Young Sim brains are like sponges, soaking up and learning everything they are exposed to. Strangely, they learn best when sitting at small wooden desks in formal classrooms. Sadly, adult Sims must work to merely retain the education level they achieved in their youth. They need facilities like libraries and museums to keep their wits sharp.

RAISING EDUCATION LEVELS

Education levels determine a city's potential. Non-polluting high-tech industries are attracted to cities that have a pool of educated employees. High education levels in a city means less pollution, less crime, and happier Sims.

If you want to raise education levels in your city, concentrate on educating the children. You should place enough schools and colleges in your city so that every young Sim has a place to learn. When young Sims do well in school, they pull up the educational average for the entire city.

Schools require funding to be effective. Insufficient funding means schools can not provide students with an adequate number of teachers. Not even average education levels can be achieved under these conditions. If education funding is very low for an extended period of time, teachers will go on strike. The minimal education students receive during a strike, holds them back for their entire life.

Do not neglect the educational needs of adult Sims. Though they can't raise the education levels in the city, they can definitely pull it down. If you build museums and libraries, you can halt the natural decay of knowledge in adults, and keep them from pulling down city education levels.



KEEPING SIMS HAPPY—AURA

The key to happiness is elusive at best. Sims (a group well-versed in the art of complaining) admire those who put aside their own personal quests for happiness and instead focus on creating good feelings for the city as a whole—its aura. Like invisible vibrations, aura resonates feelings through the city, touching the lives of all Sims who live there.

Many things affect a city's aura. High education levels, high life expectancy, a growing economy, and desirable buildings such as parks and zoos can raise aura. Pollution, crime, traffic, excessive regulations (ordinances), high tax levels, and the presence of undesirable buildings such as landfills and prisons can lower aura. A city with a high aura is home to happy Sims, and happy Sims give high approval ratings to the Mayor (and often bring gifts)!

Neighborhoods each have their own aura. Study the Aura map to see which areas of the city are happiest, and which areas could go for some special loving.

HEA MAPS, CHARTS, AND QUERIES

Certain maps and charts can give you a broad overview of the state of health, education, and aura in your city. Most helpful are:

- Health Chart
- Education Chart
- Aura Map
- Approval Rating Line Graph—a measure of the city's global aura which doubles as your Mayoral Approval Rating.

To see these maps and charts, click the **ADJUST & REVIEW** button on the Main Toolbar, and select **VIEW DATA** to see a list of available maps, charts and graphs.

Another good source of information comes from using the query tool. Click the **ADJUST & REVIEW** button and select **QUERY**. Then click on your hospitals and schools to see up-to-date information on their effectiveness.



HEA ADVISOR Q&A

Q: What makes for good health in a city?

Randall: We aren't talking about the health of a city, rather the health of the Sims in that city. Keeping garbage and pollution levels low will keep people healthier in general, but hospitals are needed to treat the sick and injured. Hospitals are only as effective as funding levels allow them to be.

Q: Why is it important to provide good health to my Sims?

Randall: When Sims are healthy, they live longer happier lives. Not to mention the fact that they can continue to provide quality work to the community for a longer period of time.

Q: How many hospitals do I need in my city?

Randall: The number of hospitals is directly a factor of your population. Each hospital can accommodate only so many patients. Simply having plenty of hospitals is not enough. Each requires adequate funding to do its part in improving Sim health. Use the query tool to check the effectiveness of your hospitals. Good grades mean good health and longer life expectancies. Bad grades may mean you need better funding or more hospitals.

Q: Why should I worry about education?

Randall: A good education for a single Sim can benefit the entire SimNation. It only takes a single Sim to develop the next high tech industry that revolutionizes the entire world! Besides if you are only training Sims to work in coal factories, your city will never be anything more than one giant smokestack and that is bad for health. A city with a known higher education will also help to bring in Sims from other cities.

Q: How do I know if I've placed enough schools and colleges?

Randall: The number of schools and colleges depends on the number of school or college aged Sims living in your city. Each school or college has a limited attendance. Simply having plenty of schools or colleges is not enough, however. Each requires adequate funding to do its part in improving Sim



education. Use the query tool to check the effectiveness of your schools and colleges. Good grades mean your Sims are soaking up knowledge. Bad grades may mean you need better funding or more schools and colleges.

Q: *What is aura?*

Randall: Aura is the way a town “feels.” If everyone in the city is happy to be there, for whatever reason, then the aura will be high and you can feel it just by walking around. If everyone is miserable, then there is a miserable “feel” to everyone and everything.

Q: *How do I go about increasing aura?*

Randall: All you need to do is increase the overall happiness of your Sims. That can come in many forms, from building a stadium to setting an ordinance that lowers pollution. The healthier the area and the more ways a Sim can unwind after work, the happier everyone will be.

UTILITIES DEPARTMENT

MEET YOUR UTILITIES ADVISOR



Gus Oddman; *Utilities Advisor*

Gus Oddman was voted “Most Likely to be Forgotten” by his high school classmates. He earned a degree in Applied Pipes and Wires (Summa Cum Mediocre) before entering public service as a grout width inspector in the Beezeltown Office of Municipal Brickwork. Gus’s ability to understand complex systems and to sidestep most major decisions made for his steady ascent up the ladder of public service. Now, as Utilities Advisor, he performs his duties with unflinching loyalty and provides information based on years of hands-on (and often neck-deep) experience.

The function of the Utilities Department is to supply power and water to the city. It’s as simple as that. All you need to worry about is building an infrastructure so that all zones are hooked up to the “grid.” Actually, there are two utility grids, power and water, and both are important.

A city without power can never attract Sims. In fact, if any building or zone loses power for too long a period of time, the Sims will move out. Sims are not very forgiving when it comes to being without power. As for water, Sims will get very




cranky if they don't have running water, but they will not react as strongly as they would to not having power.

Keeping the utilities flowing to your city can be tricky at times, but I'll be around to answer questions when you need help.

BASICS OF THE UTILITY DEPARTMENT

WHO NEEDS POWER?

All zones need power in order to develop. Power plants generate power, but the electricity they produce must travel from the power plant to the places in the city that require power. You can tell at a glance if a building needs power because unpowered buildings display a .

HOW POWER IS CONDUCTED

Power plants provide power, and high tension wires conduct this power to your undeveloped zones. You can, however, avoid running wires due to the superb work of the city engineers. Zones and buildings come with built in power infrastructure, handled by the omnipresent city engineers. Any building or zone placed within two tiles of an already powered building or zone automatically gets power. Connections over roads are not necessary. As long as power flows to a zoned tile or building, it will just keep going. Thoughtful zoning makes it feasible to create a chain of power, enabling you to power an entire city without ever placing power lines! You only need to lay power lines if you wish to transmit power beyond five tiles.

There may be cases where laying power lines is a better option. For instance, if you place a power plant in an unzoned area on the far outskirts of the city, there may not be enough zoned tiles to relay the power where it's needed. In this case power lines are needed to transmit the power to the zones. Power lines allow you to place heavy polluting, undesirable power plants far from your developing zones.



HIGH-TENSION POWER LINES

High-tension power lines carry power any distance over zones or unzoned tiles. Power lines can originate at a power plant or at any point in your city that has power and can end at any tile in the city needing power. Power is conducted through the lines to the end point, and also radiates out two tiles along the path of the power line.

The exception: roads, highways and rail can run underneath power lines. These lines can cross most types of terrain including large bodies of water. However, if the terrain is too mountainous you'll need to find another path.

POWER PLANTS


SimCity 3000 offers eight types of power plants, though not all of them are available all the time. (They must be invented first!)

Each Power Plant has a different cost, generates a different amount of power, and produces some level of pollution. You need to decide which is best for your city's needs. If you can afford it, it's worth spending the extra money to lower pollution, but there will be times when you have no choice but to cover your Sims in black soot.

As power plants age, they lose efficiency. Areas of your city that draw power from an aging power plant may experience blackouts as the power plant loses capacity. Keep an eye on your power plants by querying them to find out their current capacity vs. their potential capacity.

Power plants can also be destroyed if they are systematically overused. Run your plants at beyond full capacity for a little while and you can expect to see blackouts. Run them beyond full capacity for months on end, and they will explode.

BLACKOUTS

A power loss (or blackout) occurs when a building or zone that normally receives power is not receiving enough power to operate. It's easy to spot a blackout. If a building is unpowered it displays a  to show you it needs power.



Most blackouts occur when a power station can't generate enough power to meet the demands of the area it serves. Power will radiate as far as possible from the power station and then will just stop, leaving structures farthest from the plant without power.

Another cause for blackouts is when a "break" in the grid occurs. This can mean that a power line was destroyed, or that the established path where power radiated was disrupted through the un-zoning of powered tiles, or when a powered building on an un-zoned tile was destroyed.

UNDERSTANDING WATER

Sims need water. Zones that are not watered will never reach full development and are at a high risk of fire disasters. If water to a developed zone is cut off for too long, Sims will pack up and leave. It's not easy to tell if a tile is watered or not just by looking at your city. Slow (or no) development is an indication, but the only sure-fire methods are to query the tile, or switch to the underground view where watered tiles are easily distinguishable; they will appear blue.

TYPES OF PUMPS

Though you have natural water sources like lakes and rivers in your city, it's your responsibility to get this water to your Sims. Water must be pumped out of a source and then carried through a network of water mains to locations where it's needed. There are three kinds of water sources in your city and, not surprisingly, three kinds of pumps.

All three pumps lose pumping capacity as they age. Keep an eye on your water supply in the underground view. If zones that were previously watered appear unwatered, check the nearby pumps by querying them. They may require replacing.

Water pumping stations

Regular water pumping stations pump water from fresh water lakes and rivers. Power them with electricity and water pumping stations will pull up more water than any other kind of pump. They must be built very near a fresh water source, or they won't work. Pay attention to water pollution levels, as high pollution really slows down the efficiency of water pumping stations.



Water Towers

Water towers pump water from hidden underground springs. These springs exist everywhere, so water towers can be built anywhere. The problem with water towers is that they don't pump very much water. Water pollution can slow them down even further.

Desalinization Plants

Desalinization plants pump water from the sea and convert the salt water into fresh water. They do their job amazingly well, but they do come with some potential problems. These pumps must be built on a seacoast to be of any use, they are less efficient than a water pumping station, and they lose efficiency when water pollution is present. The SimNation Council on Anachronism expressly forbids the construction of desalinization plants before they are invented.

WATER PIPES

Water mains are large pipes that carry fresh water from pumps to buildings in the city that need water. (Don't tell the Sims this, but these same water mains also carry sewage from the buildings back to the water sources.)

Water seeps out along water mains (also called pipes), watering all areas within seven tiles of any part of the pipe. Unlike power transmission, watered tiles do not act as relay stations. For a tile to be watered, it must be within seven tiles of a pipe, not seven tiles from a watered zone.

To get water to the Sims, you must lay a water main from a water pumping station to the city, and build a network of pipes underneath the city. For full coverage, these pipes should be no more than twelve tiles apart.

When you chose the WATER PIPES tool from the Main Toolbar, the City View will automatically change to an underground view. The colors in this underground view reflect the above ground structures. Open terrain is represented in shades of brown, the darkest brown representing areas that can not be built upon. Roads are represented in gray, zoned areas are dark orange and developed areas are light orange. As you lay pipes, the area that they successfully provide water to will turn blue. If the pipes are not receiving water the ground underneath them will remain orange. You can also see the underground components of water facilities so you can make the connections with ease.



WATER SUPPLY PROBLEMS

A water pumping station can only pump out a certain amount of water each month. Water from a pump that is connected to a water main will flow toward the city and through the network of pipes until the water supply is exhausted. You may have tiles that are piped for water, but unless your pumps can generate enough water to fill all the pipes, some areas won't get the water they need. Build more pumps and connect them to the pipe network to increase the flow.

CLEANING UP DIRTY WATER

Pollution can really gum up the waterworks. Pumps lose efficiency when they're pumping polluted water. You can add more pumps to increase the supply in the short term, but don't forget to clean up the pollution.

Water Treatment Plants

One way to help clean up the water supply is by building water treatment plants. They must be connected by pipes to the water grid in order to be effective and these too lose efficiency as they age. Check on them regularly by querying them.

Ordinances

If water pollution in your city is severe, or you don't want it to become severe, consider enacting ordinances to reduce pollution. They cost money, but they make a real difference.

NEIGHBOR DEALS

Mayors from neighboring cities may approach you from time to time with offers to sell power or water to you, or offers to pay you to supply them with power or water.

These deals are only available if you have built connections to a neighboring city. Trading power requires that you build a power line connection to a neighbor; trading water requires a water main connection be built. To make the connection, run a power line or water main up to the city border. Your city engineers will help you make the final connection. Whenever a deal is in place you can check up on it by opening the Neighbors window from the ADJUST & REVIEW button menu in the Main Toolbar.



You may make power and water connections to any or all land-adjacent neighbors. You can't build power or water connections across water, so if your city is an island, you can't build any connections or make any utilities deals.

Buying Power and Water

If you don't want to clutter up your city with unsightly and expensive facilities, you can purchase power or water from a neighbor. You must have the proper utilities connection in place before a deal can be made. Each month, a contracted neighbor will look at your city's power or water needs at the connection point, and will supply any deficit.

The connection point is critical. Any area of the city that you want to supply with purchased power or water must be able to be served from the connection point. If no pipe network or power transmission path exists between the connection and an area that needs utilities, the neighbor will not recognize the deficit and will not sell you enough power or water to cover that deficit.

Each month, funds are deducted from your treasury based on how much power or water you needed. If you didn't need any during the month, you still have to pay a minimum fee. You should also take into account that there is a large penalty for canceling the deal.

Selling Power or Water

If you are generating excess power or water and you have the appropriate utilities connection in place, you may be approached by a neighbor looking to purchase these resources. Each month you are responsible to supply them with the contracted amount. Each month, you'll receive a cash payment.

The connection point is critical. If you're generating excess power or water in areas that cannot serve the connection point, you may not be able to fulfill the contract. Make sure there is a clear transmission path (pipe or wires) from the source of your excess utilities to the connection point.

If conditions change and you can no longer provide the power you promised, the deal is canceled and you'll be charged a large penalty.



UTILITIES DEPARTMENT MAPS, GRAPHS, AND QUERIES

Certain maps and graphs can give you a broad overview of the status of your utilities coverage. maps most helpful are:


- Electric Power Coverage
- Water Supply
- Pollution

To see these maps, click the Adjust & Review button on the Main Toolbar, and select View Data to see a list of available maps, charts and graphs.

Another good source of information comes from using the query tool. Click the Adjust & Review button and select Query. Then click on your power plants and pumps to see up-to-date information on their capacity.

UTILITIES ADVISOR Q&A

Q: How can I tell if my Sims have enough power?

Gus: Well, I guarantee you'll hear about it if they aren't getting enough power. But look for buildings that display a  to show they aren't receiving power.

Q: Sims are complaining about blackouts. How do I restore power?

Gus: When a blackout occurs, you should investigate the cause of the problem before making a hasty conclusion. First, query the power plants to see how close to maximum capacity they have been running. You may need to place more power plants. If the plants seem fine, query tiles between the power plant and the location of the blackout to find a break in the line. Then use zoning or power lines to restore power.



Q: Why isn't any water getting to my Sims?

Gus: If you've built a network of water pipes to bring water from your pumps to your zones, it's likely that the pumps aren't pumping enough water to meet the demand. First thing I'd do is query the pumps to see what capacity they are running at. When they are being used to their max, you will need to build more. If the capacity is not reaching its potential you might have a water pollution problem that's reducing their efficiency, or it could indicate that you need to place them closer to a source of water.

Q: Can I buy water and power from neighbors?

Gus: You sure can. And you can sell it too. Trading utilities requires that you build a power or water connection to a neighbor. If you lay a water main or a power line up to your city border, your engineers will help you make the connection. Neighbors are always eager to make deals. Just be sure to read the fine print before you sign the contract.

Q: Is it my imagination or do Sims not want to live near power lines?

Gus: Good catch. You are talking about the high-tension power lines that are big and ugly and take up a lot of space. Yes, they will lower an area's land value. Try to keep them away from Residential and Commercial zones.



CREDITS

Development Director: Christine McGavran

Architect and Senior Engineer: Greg Kearney

Engineering: Dr. Venkat Ajanagadde, Grant Blaha, Kevin O'Hare, Paul Kerchen, Cisco Lopez-Fresquet, Heather Mace, Cort Oi, Paul Pedriana, Jason Slater, Benjamin Thompson, Vasyi Tsvirkunov, Alex Zvenigorodsky, The Mayor by Night

Art Director: Ocean Quigley

User Interface Art Director: Christian Stratton

Art: Charlie Aquilina, Justin Brown, Kevin Byall, Hawkin Chan, John Frantz Jr., Kevin Kraus, Kok Wee Lim, Broderick Macaraeg, Ward Moore, David Patch

Additional Art: Alpha Omega, Flying Rhino, Michael Sechman & Associates, REM Infografica

Sound and Music Lead Engineer: Paul Wilkinson

Sound and Music Director: Jerry Martin

Sound Designers: Kent Jolly, Robi Kauker

Compositions: Kirk Casey, Anna Karney, Robi Kauker & Kent Jolly, Jerry Martin, Marc Russo

Musicians: Darol Anger, Sheldon Brown, John R. Burr, Ruth Davies, Richard DeGraffenreid, Louis Fasman, Mary Fetting, Rock Hendricks, Art Hirahara, Kent Jolly, Robi Kauker, David Lauser, Glenn Letsch, Gary Lillard, Jerry Martin, Eddie Ramirez, Marc Russo, Paul van Wageningen, Don Veca, Jason Wall

Creative Director: Jim Gasperini

Executive Producer: Lucy Bradshaw

Associate Producers: Michael Cox, Tim LeTourneau, Laura O'Shea

Assistant Producers: Jeffrey J. Feil, Creighton Hurt, Rick Marazzani

Project Management: Melissa Bachman-Wood

Administrative Support: Brooke Harris

Localization Manager: Knut Grossman

Localization Assistance: Michelle Perry

Product Manager: Corrine Finegan, Ann Cortese, Steve Perkins

Marketing Assistant: Mike Jeffress

Public Relations: Patrick Buechner

Documentation: Scott Shicoff

Documentation Layout: Golden VizComm

Package Design: Soo Hoo Design

In-Game Written Content: Tom Bentley, Rusel DeMaria, Jim Gasperini, Laura O'Shea, Scott Shicoff, Bob Sombrio, Chris Trotter

Quality Assurance Lead: Marc Meyer

Quality Assurance Assistant Leads: Shannon Gray, Myka Macaraeg, Keith Meyer

Quality Assurance: Aaron Bennion, Joe Bird, Sean Blair, Daniela Castillo, Stephen Cohrs, Jessica Durante, Rick Garlick, Dave Graham, Carl Grande, Chris Grantham, Duane Gundrum, Jake Harrison, Michelle Harrison, Kian Harvey, Dave Haws, Phillip Hinkle, Damian Hutchinson, Robert Ivey, Russell Johnson, Trina Ladrado, Mike Lawson, Zir-Paul Macaraeg, Mahmud Rihab Mahmud, Owen Nelson, Minkz Ngo, Paul Parinas, Jon Pryne, Patrick Schultz, Timothy Skuza, Terry Smith

Electronic Arts Quality Assurance: Etienne Grunenwald, Gabriel Gils Carbo, Daniel Hiatt, Jamil Dawsari, Benjamin Crick, Bobby Joe, Anatol Somerville, Michael Jung

General Manager: Luc Barthelet

Executive In Charge of Production: Rob Martyn

Electronic Arts Testers: Yakim Hayuk, Andy O'Brien, Rebecca Colbourn



Special Thanks To: Steffen Bartschat, Eric Bowman, Jeff Braun, Kevin Brown, Henry Connelly, Jamie Doornbos, Cherylonda Fitzgerald, Mark Fortuna, Bing Gordon, Maia Graf, Trish Halamandaris, Les Hamilton, Robin Harper, Anthony Hobbs, Don Hopkins, Joe Keene, Lisa Laverty, Jim Mackraz, Michael Martak, Lisa Motzkin, Tom Schenck, Laurel Shicoff, Zachary Thomas, Frank Vigil, Lon Westfall, Lorraine Woodruff, Will Wright, Charlotte Yates, Rhea Yost, Serdar Copur, John Ylinen, Joe Longworth, Colin Boswell, Jim Woodlee, Michael Perry, Suneel Ratan, Mike Jeffress, Naomi Macaraeg, Bob 3000, Fred Bowie, Steve Hart, Tari Kobylanski, Beverly Lam, Kirk Lesser, Lori McAdams, Tammy Sauer, Charlotte Yates, Nancy DuBois, Carolyn Kiley, Mariciel Abiog, Everyone At Maxis!

TECHNICAL SUPPORT

Please see the enclosed Reference Card for technical support information.

GAMEPLAY HELP

Call EA's HINTS and INFORMATION HOTLINE for recorded hints, tips, and passwords 24 hours a day, 7 days a week!

In the US, dial 900-288-HINT (4468). 95c per minute.

In CANADA, dial 900-451-4873. \$1.15 (Canadian) per minute.

If you are under 18, be sure to get a parent's permission before calling. Hotline requires a touch-tone telephone. Call length determined by user; average length is four minutes. Messages subject to change without notice.

LIMITED WARRANTY

Electronic Arts ("EA") warrants to the original purchaser of the computer software product, for a period of ninety (90) days from the date of original purchase (the "Warranty Period"), that under normal use, the media and the user documentation are free from defects in materials and workmanship.

WARRANTY CLAIMS

To make a warranty claim under this limited warranty, please return the product to the point of purchase, accompanied by proof of purchase (i.e., purchase receipt), your name, your return address, and a statement of the defect. OR send the compact disc(s) to us at the address below within 90 days of purchase. Include a copy of the dated purchase receipt, your name, your return address, and a statement of the defect. EA or its authorized dealer will replace the product and return it to you (postage prepaid) or issue you with a credit equal to the purchase price.

RETURNS WITHIN 90 DAY WARRANTY PERIOD—To replace defective media within the 90-day warranty period, send the defective media, a copy of the original sales receipt, a return address, and a small note describing the difficulties you are experiencing to the address below. If the software media was damaged through misuse or accident, you will need to follow the returns after warranty policy detailed below.

RETURNS AFTER WARRANTY—To replace defective media after the 90-day warranty period has expired, send the original disc(s) to the address below. Enclose a statement of the defect, your name, your return address, and a check or money order for \$7.50 per replacement compact disc.



The foregoing states the purchaser's sole and exclusive remedy for any breach of warranty with respect to the software product.

Electronic Arts Customer Warranty
P.O. Box 9025
Redwood City, California 94063-9025

NOTE: We suggest you send your package in a manner that is traceable.

If you have warranty questions, you can also contact Customer Warranty via e-mail at cswarranty@ea.com or by phone at (650) 628-1900.

LIMITATIONS

This warranty is in lieu of all other warranties and no other representations or claims of any nature shall be binding on or obligate Electronic Arts. Any implied warranties applicable to this software product, including warranties of merchantability and fitness for a particular purpose, are limited to the ninety (90) day period described above. In no event will Electronic Arts be liable for any special, incidental, or consequential damages resulting from possession, use, or malfunction of this Electronic Arts software product.

Some states do not allow limitations as to how long an implied warranty lasts and/or exclusions or limitations of incidental or consequential damages so the above limitations and/or exclusions of liability may not apply to you. This warranty gives you specific rights, and you may also have other rights that vary from state to state.

NOTICE

Electronic Arts reserves the right to make improvements in the product described in this manual at any time and without notice.

This manual and the software described in this manual are copyrighted. All rights are reserved. No part of this manual or the described software may be copied, reproduced, translated, or reduced to any electronic medium or machine-readable form without the prior written consent of Electronic Arts, P.O. Box 9025, Redwood City, California 94063-9025, Attn: Customer Support.

SimCity, Maxis, Electronic Arts and the Electronic Arts logo are trademarks or registered trademarks of Electronic Arts in the U.S. and/or other countries. All rights reserved.

All other trademarks are the property of their respective owners.

Software and documentation © 1998 Electronic Arts. All rights reserved.